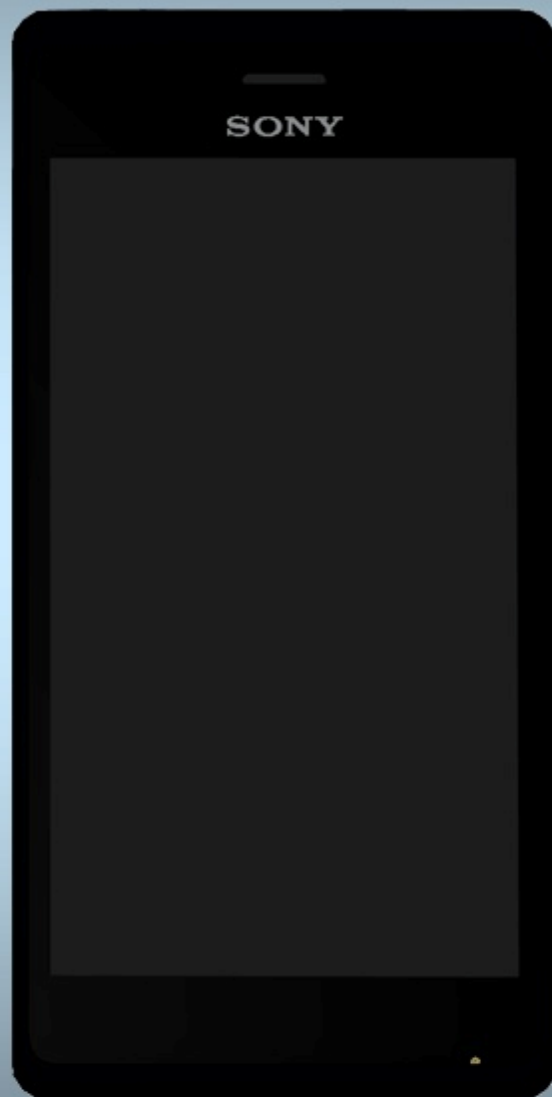


SONY

make.believe

Working Instructions

- mechanical -



Xperia™ M, Xperia™ M Dual

C1904, C1905, C2004, C2005

CONTENTS

1	Exterior Views.....	4
1.1	C1904, C1905, C2004, C2005	4
2	Tools	5
3	Disassembly.....	6
3.1	Battery Cover Assy	6
3.2	Battery.....	7
3.3	Rear Cover Assy	7
3.4	Main PBA	10
3.5	ANT Board	12
4	Replacement	14
4.1	Battery Cover Assy	14
4.2	ANT Board	15
4.3	Ant Speaker Gasket	16
4.4	Camera Key	17
4.5	Coaxial Cable.....	19
4.6	Diffusion Film	21
4.7	Display	22
4.8	Earspeaker& EarSpeaker Adhesive	26
4.9	Flash LED Gasket.....	28
4.10	Front Cover Assy	29
4.11	Kapton Tape TP connector.....	30
4.12	Label	31
4.13	Light Bar Gasket	32
4.14	Light Pipe Sensor & Rubber Sensor	33
4.15	Link FPC & Link FPC Gasket.....	35
4.16	Link FPC Gasket B	38
4.17	Loudspeaker & Speaker Gasket.....	39
4.18	Main Camera 5M&Camera Connector Mylar Tape&Camera Gasket.....	41
4.19	Microphone Rubber & Microphone Mesh.....	43
4.20	2 nd Microphone Rubber	45
4.21	Rear Cover	46
4.22	Reflective Sheet	47
4.23	RF Port Rubber.....	48
4.24	SIM Board & SIM Board Adhesive.....	49
4.25	Speaker Mesh	51
4.26	Speaker Mesh on Rear Cover	52
4.27	Speaker Sponge	53
4.28	Touch Panel & Touch Panel Adhesive	54

4.29	Water Indicator	61
4.30	Volume Key	63
4.31	Board Swap - Replacement	65
4.32	Board Swap – Change Label	65
4.33	Board Swap – Customize of Software	65
5	Reassembly.....	66
5.1	Front Cover Assy& ANT Board	66
5.2	Main PBA	68
5.3	Rear Cover Assy	69
5.4	Battery.....	70
5.5	Battery Cover Assy	70
6	Revision History	72

***For general information about mechanical repair related issues, refer to
1220-1333: Generic Repair Manual - mechanical***

1 Exterior Views

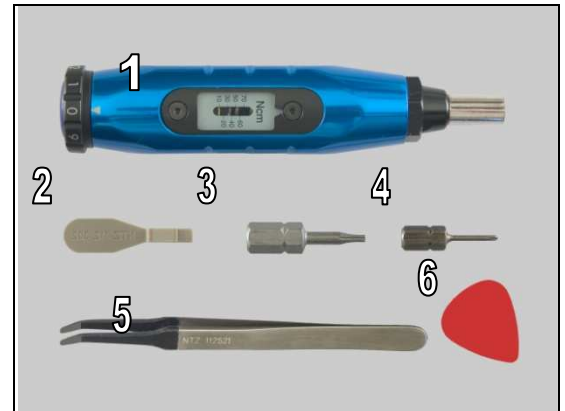
1.1 C1904, C1905, C2004, C2005



2 Tools

SPECIAL TOOLS

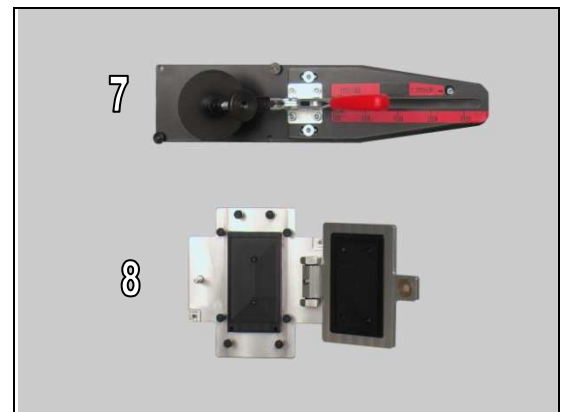
1. Torque Screwdriver
2. Front Opening Tool
3. Bits (T5)
4. Bits (JCIS No 0)
5. Flex Film Assembly Tool
6. Guitar Pick



For part no's on the tools above, refer to the 'Tools Catalogue/Matrix'!

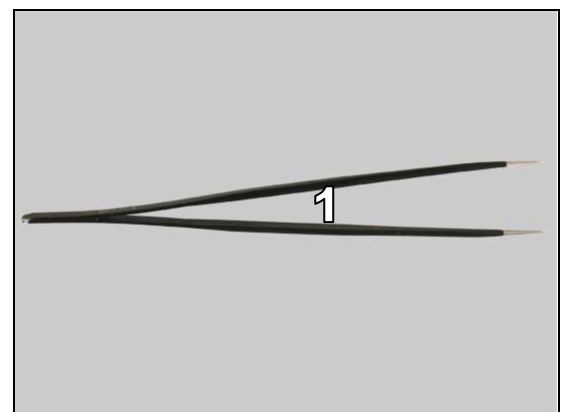
SPECIAL TOOLS

7. Press Tool
8. Press Fixture



STANDARD TOOLS

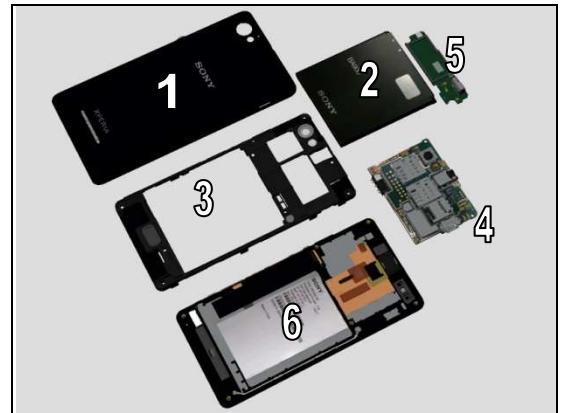
1. Tweezers



3 Disassembly

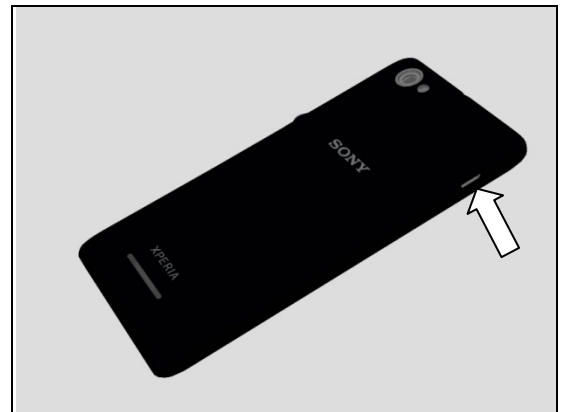
The disassembly is done in the following order:

1. Battery Cover Assy
2. Battery
3. Rear Cover Assy
4. Main PBA
5. ANT Board
6. Front Cover Assy



3.1 Battery Cover Assy

Insert finger into the USB Port as shown.



Pull upwards to release the hooks of Battery Cover Assy.



Remove Battery Cover Assy.



Disassembly

3.2 Battery

Raise the bottom of the Battery to release it.

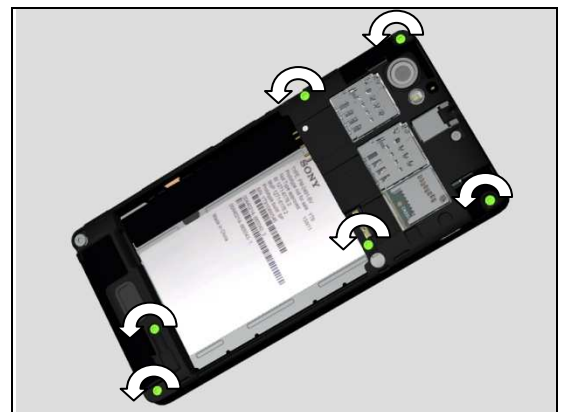


Remove the Battery.



3.3 Rear Cover Assy

Remove the six screws M1.6*4.0 by using a screwdriver with Bits (T5).



Remove the Screw M1.6*3.0 by using a screwdriver with Bits (T5).



Disassembly

Remove the Screw M1.4*2.4 by using a screwdriver with Bits (JCIS No 0).



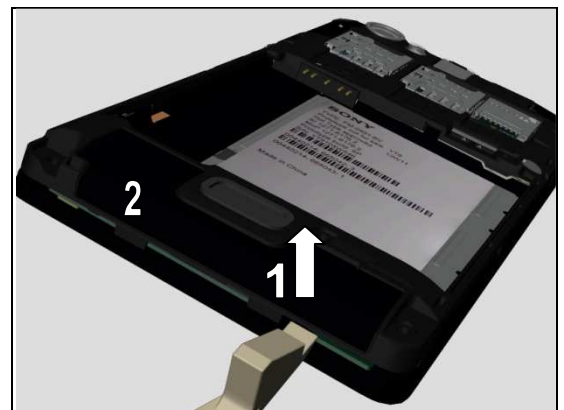
There are eleven hooks secure the Rear Cover as shown.



Insert the Front Opening Tool and pull upwards to release the right bottom corner as shown

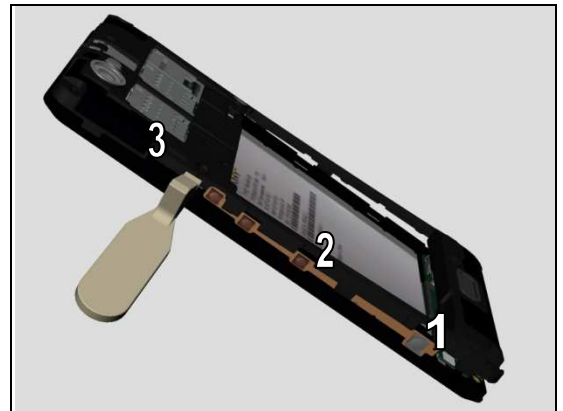


Release the two hooks on the bottom side.

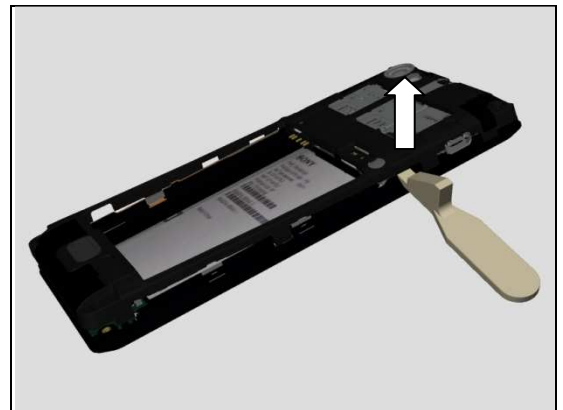


Disassembly

Release the left side as shown.



Release the right side as shown.



Raise the bottom side at approximately 30°.



Pull upwards to release the top side as shown.



Disassembly

Remove the Rear Cover.

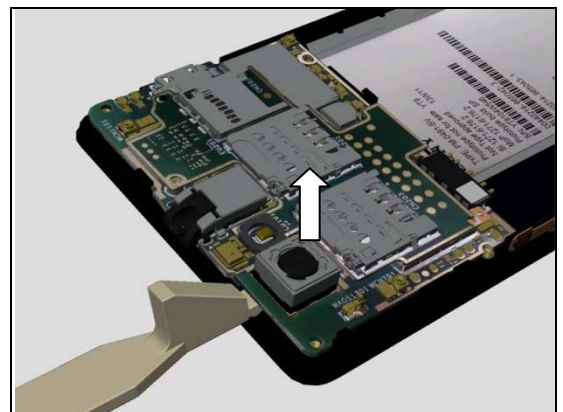


3.4 Main PBA

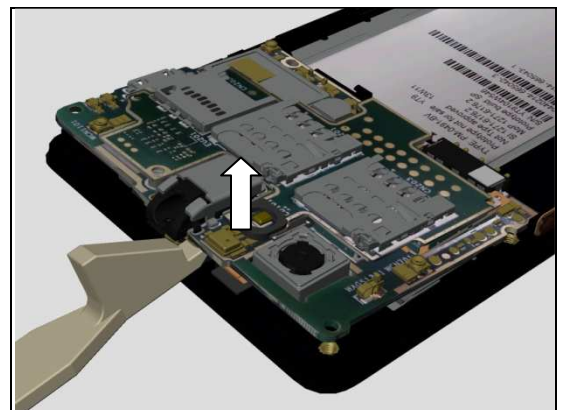
There are four snap hooks secure the Main PBA.



Insert the Front Opening Tool underneath the Camera and pull upwards to detach it from the adhesive.

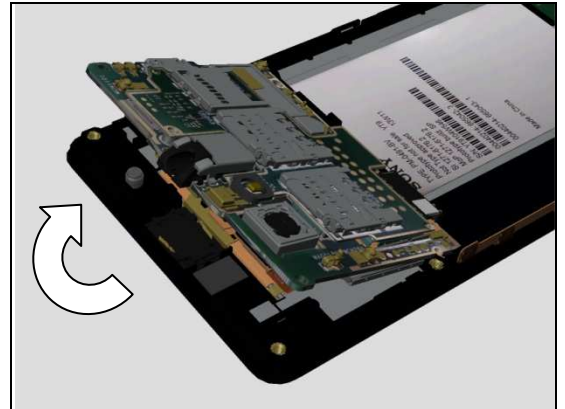


Release the hook on the top side of Main PBA by using Front Opening Tool.

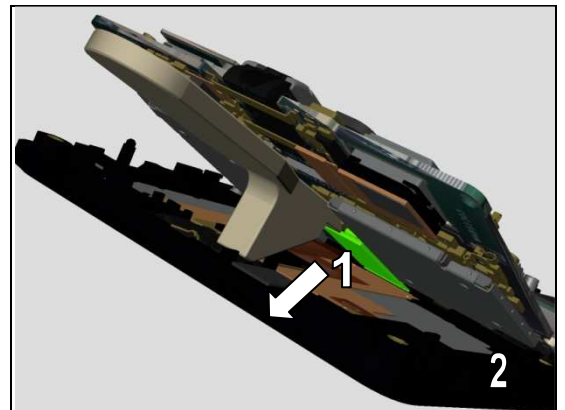


Disassembly

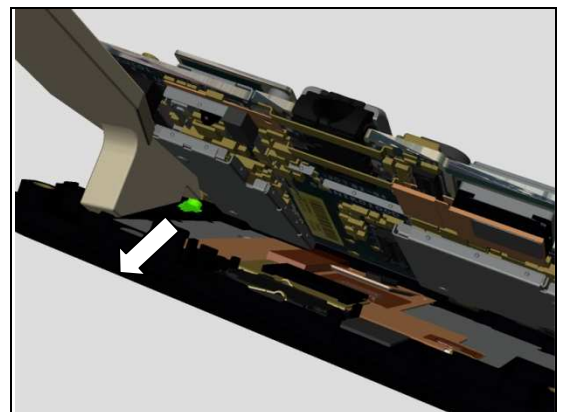
Raise the top side of the Main PBA approximately 30° to release the other hooks.



Unsnap the two BtB connectors carefully by using the Front Opening Tool as shown.



Unsnap the coax connector by using Front Opening Tool.



Remove the Main PBA.



Disassembly

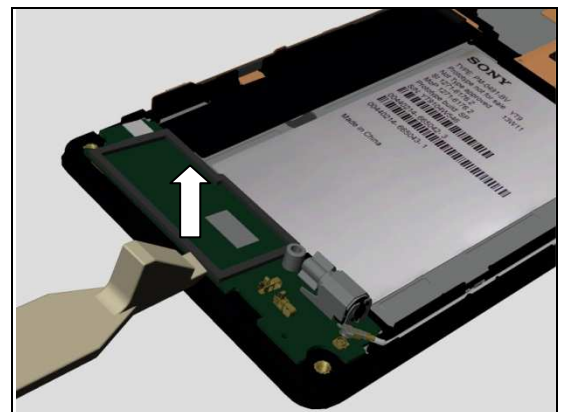
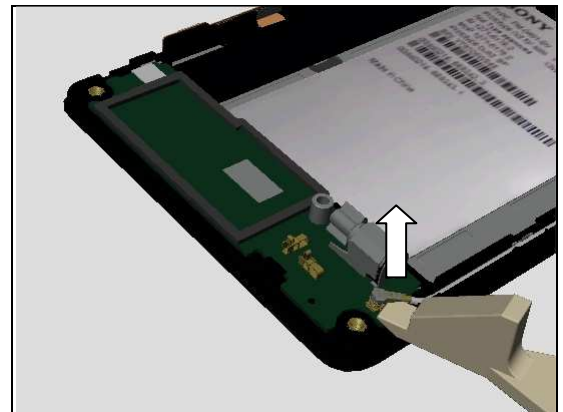
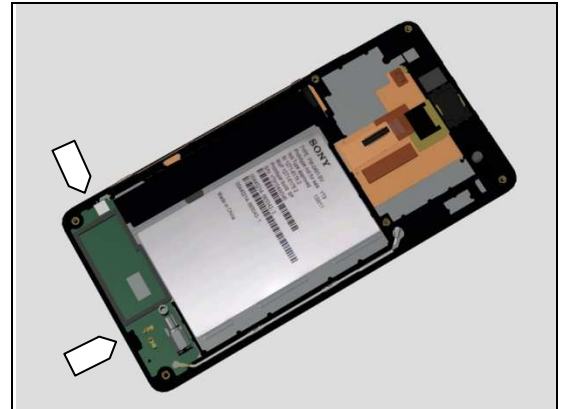
3.5 ANT Board

There are two hooks snap the ANT Board.

Release the coax connector by using the Front Opening Tool gently.

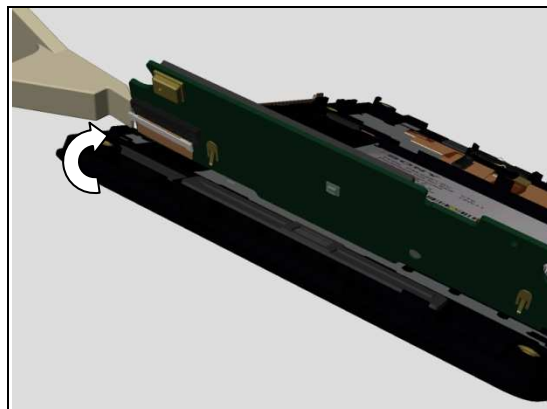
Release the hook on the bottom side.

Raise the bottom side of the ANT Board approximately 30°.

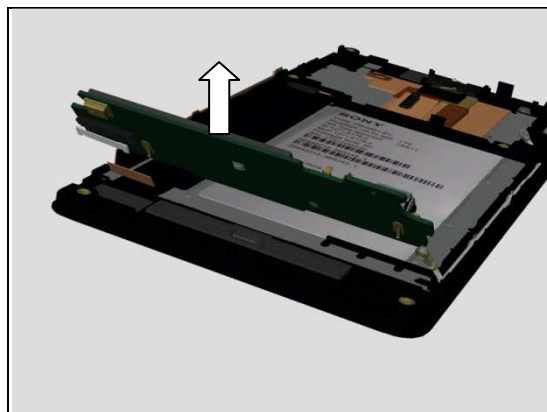


Disassembly

Unlock the ZIF connector.



Remove the ANT Board.



4 Replacement

4.1 Battery Cover Assy

Follow the 3.1 Disassembly instructions!

Prepare the new Battery Cover Assy.

Follow the 5.5 Reassembly instructions!



Replacement

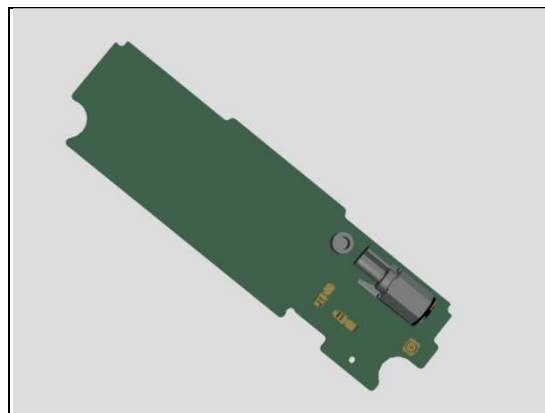
4.2 ANT Board

Follow the 3.1 – 3.3 Disassembly instructions!

Prepare the new ANT Board.

Follow the 4.3, 4.27, 4.29 Installation Instructions!

Follow the 5.3 – 5.5 Reassembly instructions!



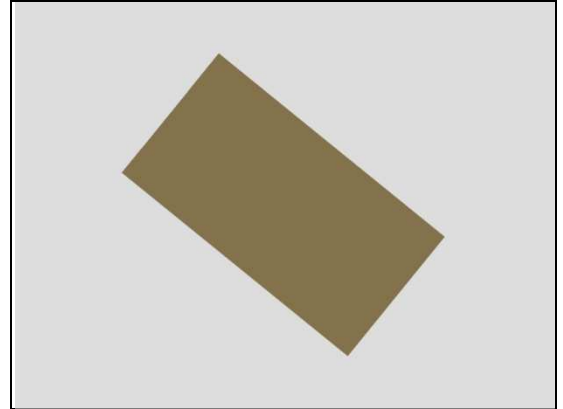
Replacement

4.3 Ant Speaker Gasket

Follow the 3.1 – 3.3 Disassembly instructions!
Carry out the Removal as described below!
Prepare the new Ant Speaker Gasket
Carry out the Installation as described below!
Follow the 5.3 – 5.5 Reassembly instructions!

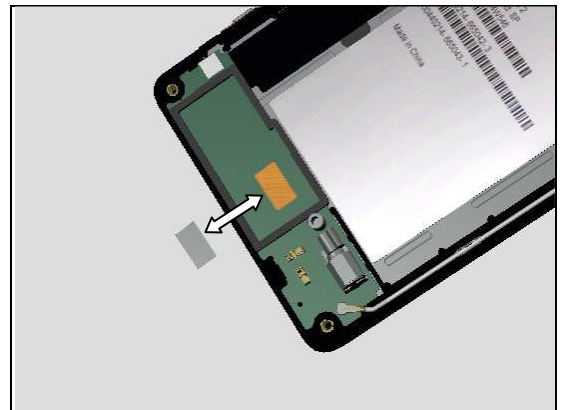
REMOVAL

Peel off to remove Ant Speaker Gasket by using Flex Film Assembly Tool as shown.



INSTALLATION

Place the new Ant Speaker Gasket in the golden area and press to make it securely attached.



Replacement

4.4 Camera Key

Follow the 3.1 Disassembly instructions!
Carry out the Removal as described below!
Prepare the new Camera Key.
Carry out the Installation as described below!
Follow the 5.5 Reassembly instructions!

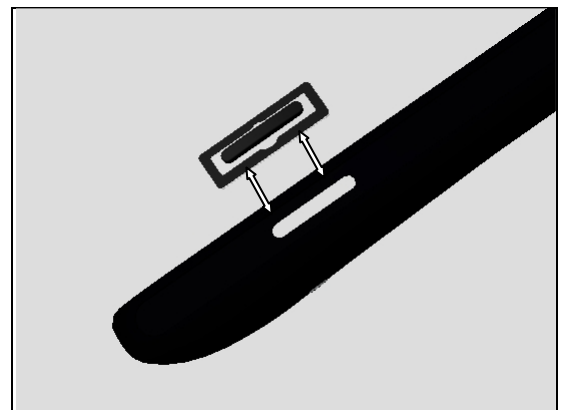
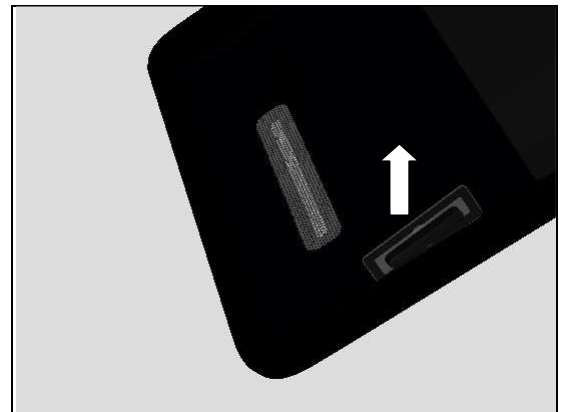
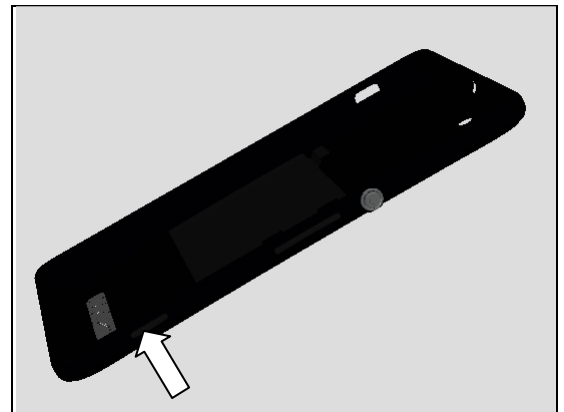
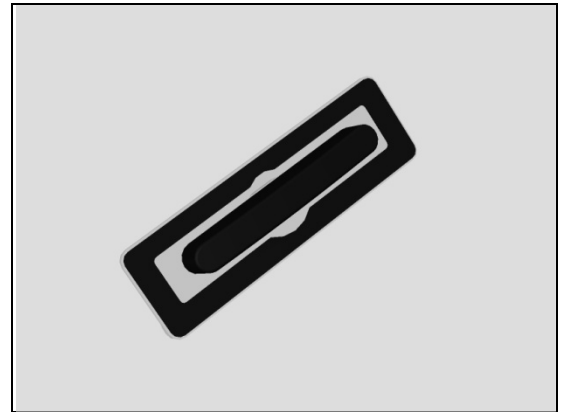
REMOVAL

Push with the tweezers on the Camera Key from outside until the key becomes released.

Remove it.

INSTALLATION

Place the Camera Key into proper place.



Replacement: Camera Key

Press along the surface until its properly installed as shown from the inside.



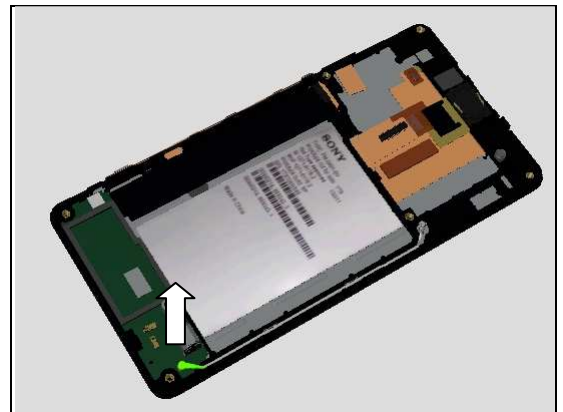
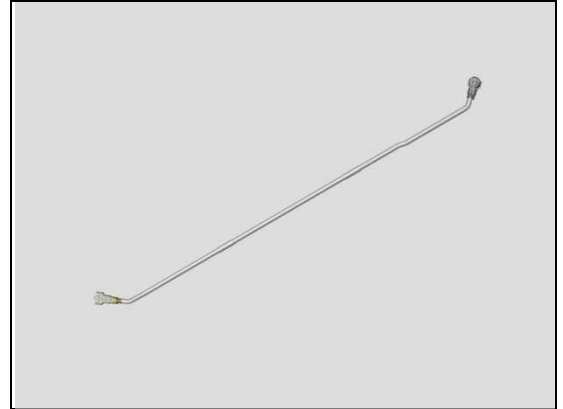
Replacement

4.5 Coaxial Cable

Follow the 3.1 – 3.4 Disassembly instructions!
Carry out the Removal as described below!
Prepare the new Coaxial Cable.
Carry out the Installation as described below!
Follow the 5.2 – 5.5 Reassembly instructions!

REMOVAL

Release the coax connector on the ANT Board side by using the Front Opening Tool.



Pull the Coaxial Cable to release it from Main PBA side.



INSTALLATION

Place the Coaxial Cable in place.



Replacement:Coaxial Cable

Put the Coaxial Cable into the cavity and press as shown place to fix the Coaxial Cable.



Press along the Coaxial Cable to secure the place.



Connect the coax connector on the ANT Board side as shown.



Replacement

4.6 Diffusion Film

Follow the 3.1 – 3.3, 3.5 Disassembly instructions!
Follow the 4.13, 4.22 Removal instructions!
Carry out the Removal as described below!
Prepare the new Diffusion Film.
Carry out the Installation as described below!
Follow the 4.13, 4.22 Installation instructions!
Follow the 5.1, 5.3 – 5.5 Reassembly instructions!

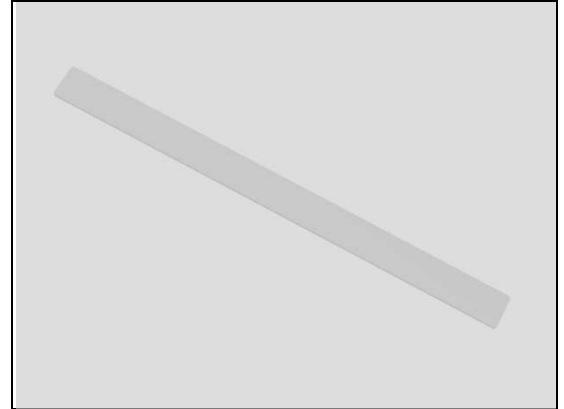
REMOVAL

Detach to remove it from Front Cover Assy.

INSTALLATION

Place the Diffusion Film into the cavity.

Press long to secure its attached firmly.



Replacement

4.7 Display

Follow the 3.1 – 3.4 Disassembly instructions!

Follow the 4.28 Removal instructions!

Carry out the Removal as described below!

Prepare the new Display.

Carry out the Installation as described below!

Follow the 4.28 Installation instructions!

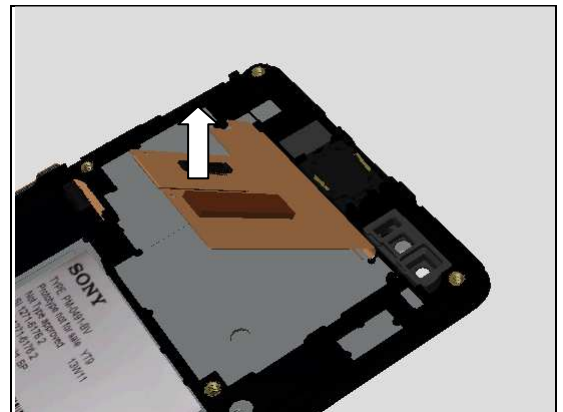
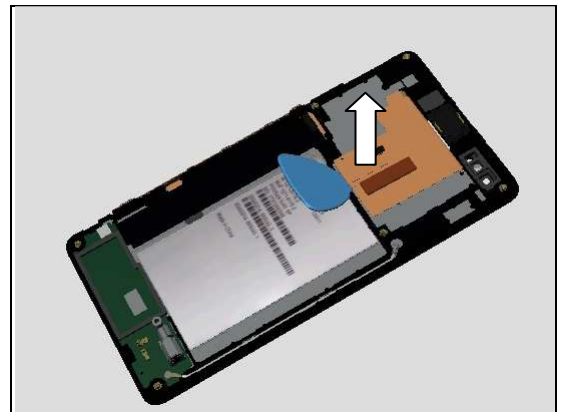
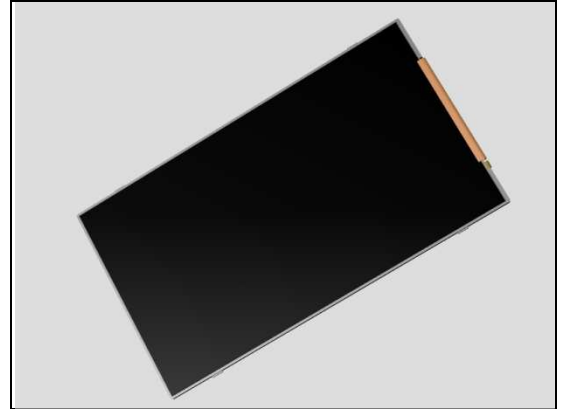
Follow the 5.2 – 5.5 Reassembly instructions!

REMOVAL

Insert the Guitar Pick as shown in picture and gently slide around the FPC to release the FPC from Front Cover Assy.

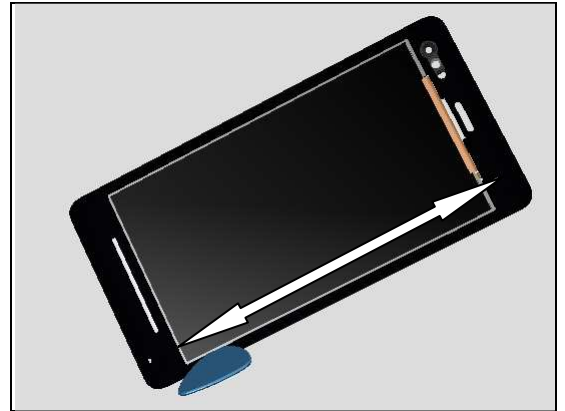
Raise the FPC gently to release it.

Turn the Unit over to the opposite side and Insert the Guitar Pick as shown in picture and gently slide back and forth to release this side of the Display.

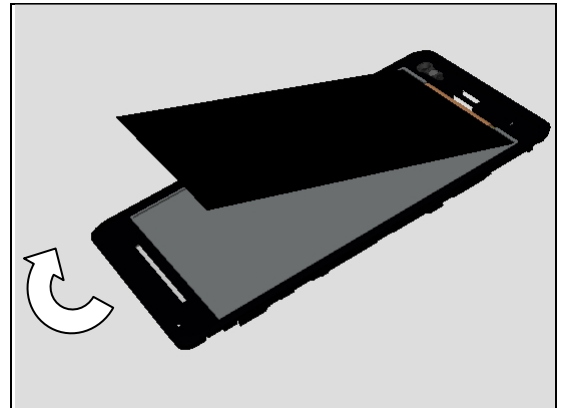


Replacement: Display

Do the same on the opposite side.

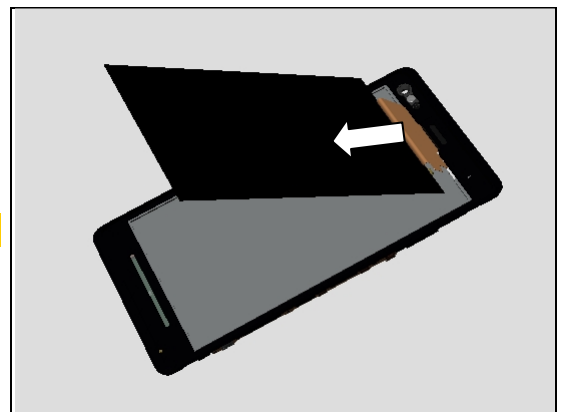


Raise the bottom side of Display at 30° approximately.



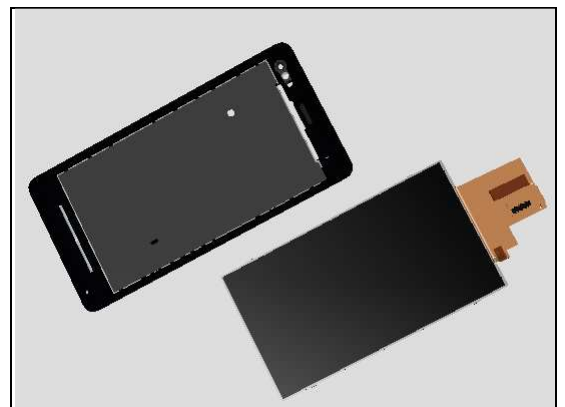
Pull to release the FPC of Display through the hole gently.

Be careful of the Display FPC!



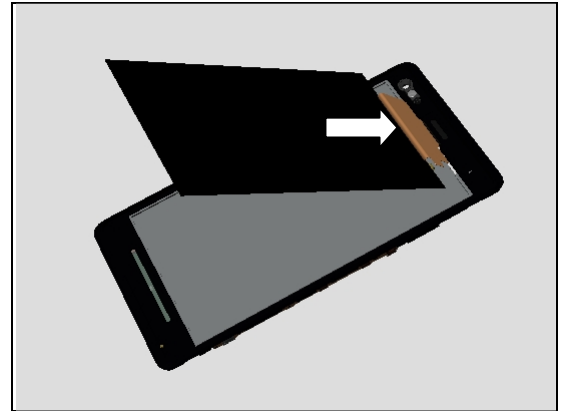
INSTALLATION

Prepare a new Display.

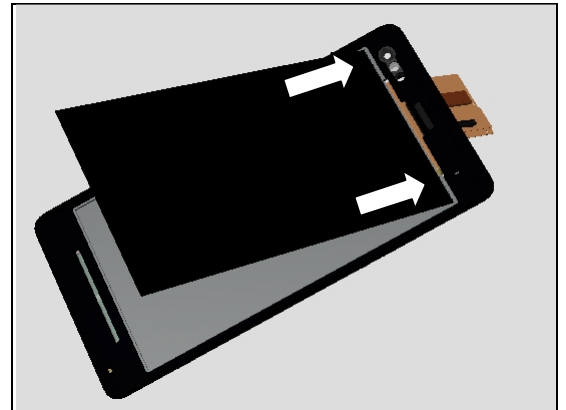


Replacement: Display

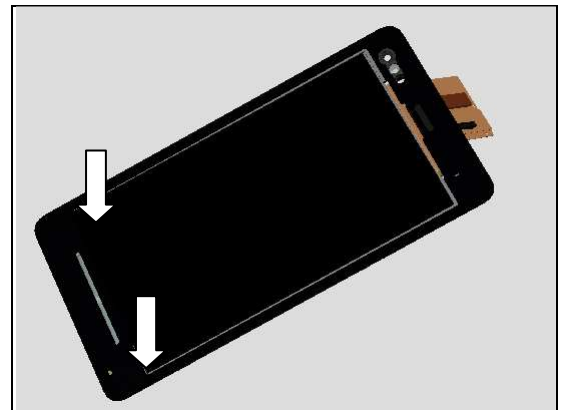
Insert the FPC of Display through the hole on the Front Cover Assy.



Insert the top side into the cavity.

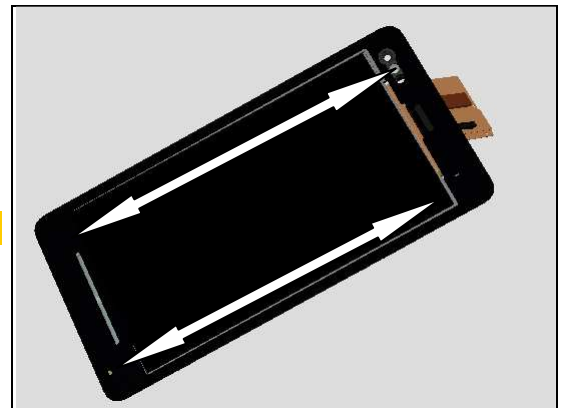


Press the bottom side to hook the Display.



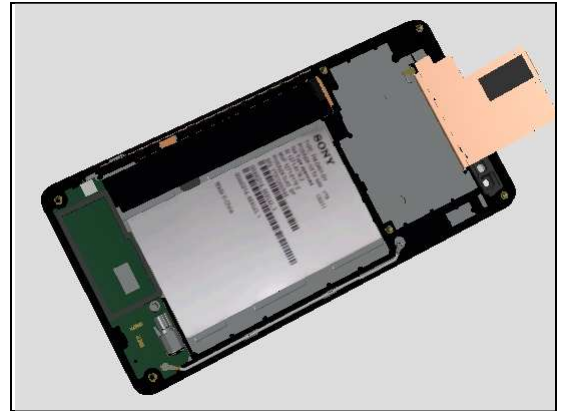
Press along to secure the display is fastened.

Do not touch the screen!

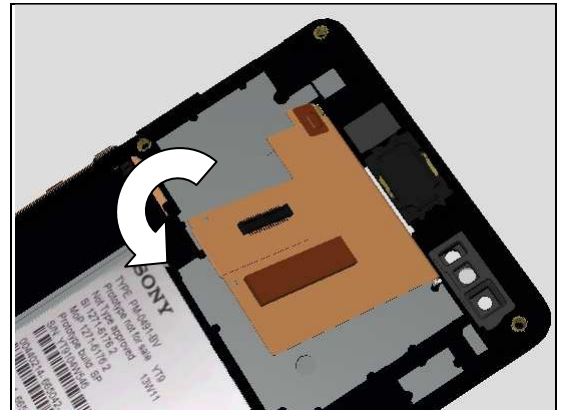


Replacement: Display

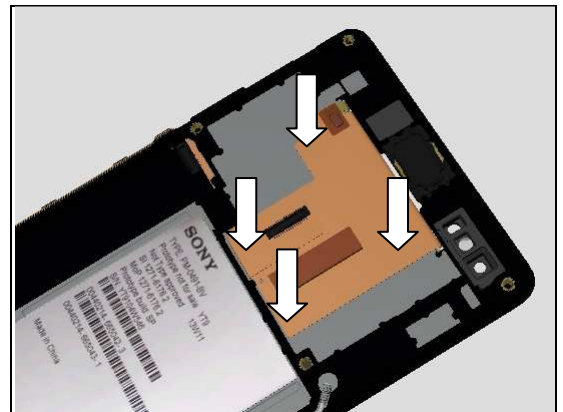
Turn over to the other side.



Attach the FPC align the guiding line on the Front Cover Assy.



Press along the FPC to make it securely attached.



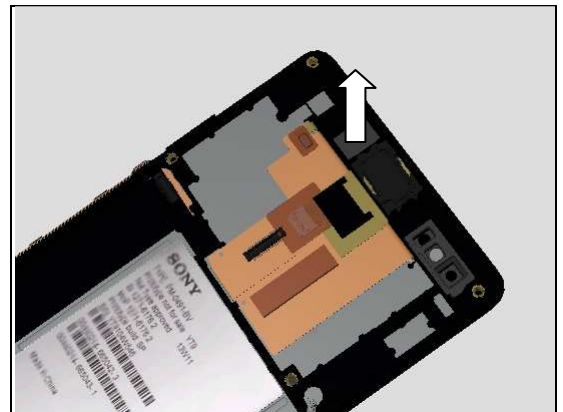
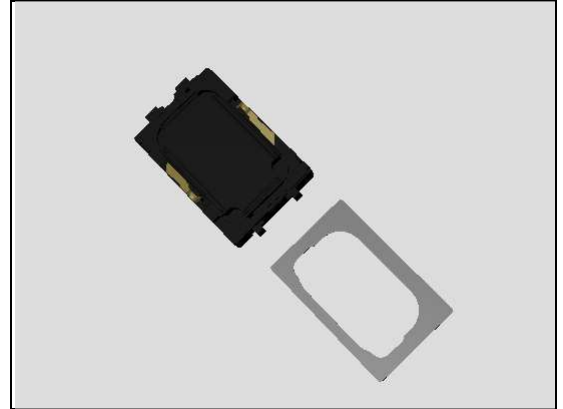
Replacement

4.8 Earspeaker& EarSpeaker Adhesive

Follow the 3.1 – 3.4 Disassembly instructions!
Carry out the Removal as described below!
 Prepare the new Earspeaker& Earspeaker Adhesive.
Carry out the Installation as described below!
Follow the 5.2 – 5.5 Reassembly instructions!

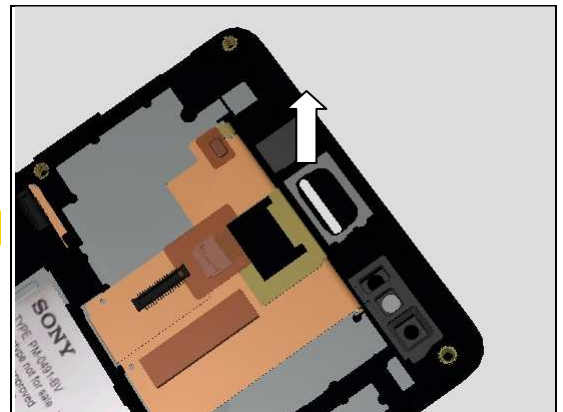
REMOVAL

Insert the Front Opening Tool from left side and pull upwards to release the Earspeaker.



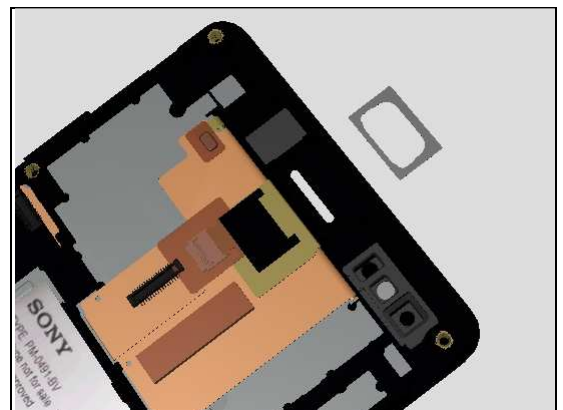
Detach to remove the EarSpeaker Adhesive.

Remove the residue until its clean!

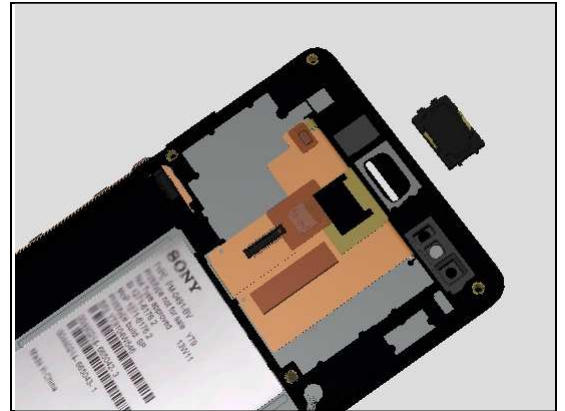


INSTALLATION

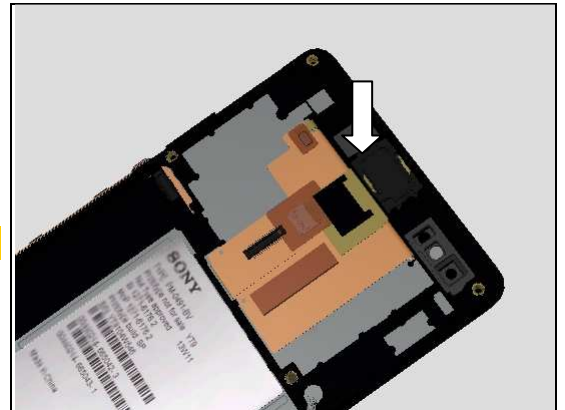
Attach the new EarSpeaker Adhesive into the cavity as shown.



Note the orientation of the EarSpeaker to be installed.



Do not touch the pins!



Replacement

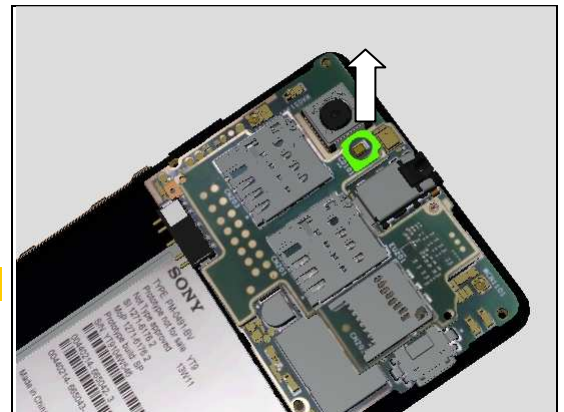
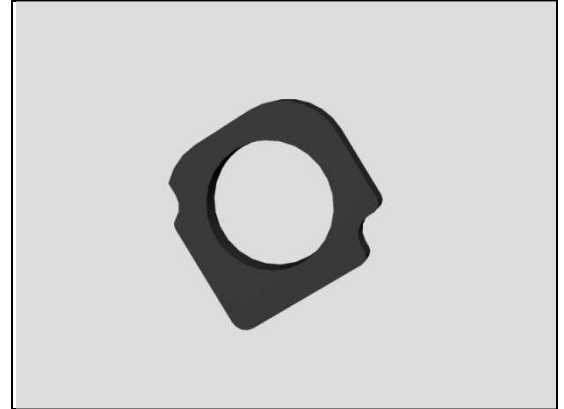
4.9 Flash LED Gasket

Follow the 3.1 – 3.3 Disassembly instructions!
Carry out the Removal as described below!
 Prepare the new Flash LED Gasket.
Carry out the Installation as described below!
Follow the 5.3 – 5.5 Reassembly instructions!

REMOVAL

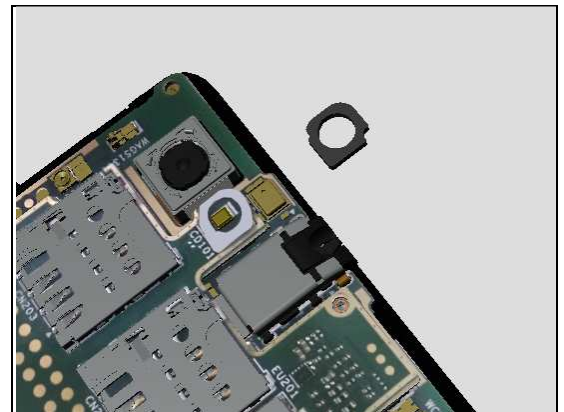
Peel off the Flash LED Gasket by using the Flex Film Assembly Tool.

Remove the residue until its clean!



INSTALLATION

Place the Flash LED Gasket aligns to the guiding ring and press to make it securely attached.



Replacement

4.10 Front Cover Assy

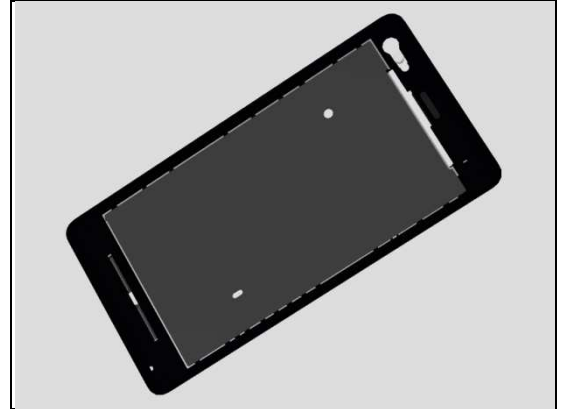
Follow the 3.1 – 3.5 Disassembly instructions!

Follow the 4.6-4.8, 4.11-4.14, 4.16, 4.22, 4.28 Removal instructions!

Prepare the new Front Cover Assy.

Follow the 4.6-4.8, 4.11-4.14, 4.16, 4.22, 4.28 Installation instructions!

Follow the 5.1 – 5.5 Reassembly instructions!



Replacement

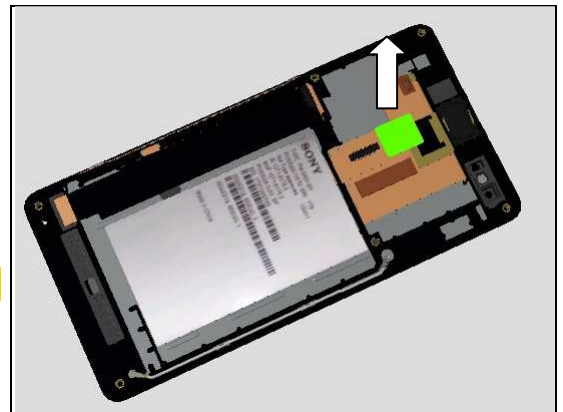
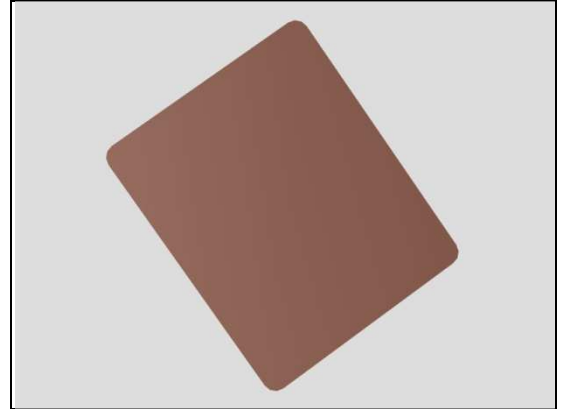
4.11 Kapton Tape TP connector

Follow the 3.1 – 3.4 Disassembly instructions!
Carry out the Removal as described below!
Prepare the new Kapton Tape TP connector.
Carry out the Installation as described below!
Follow the 5.2 – 5.5 Reassembly instructions!

REMOVAL

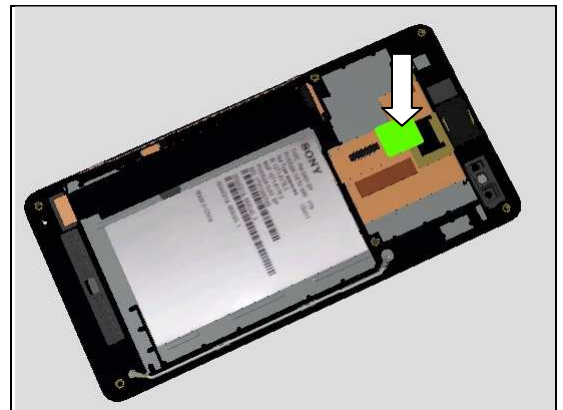
Detach to remove the Kapton Tape TP connector by using the Flex Film Assembly Tool.

Do not damage the Touch Panel FPC!



INSTALLATION

Attach a new Kapton Tape TP connector to cover the ZIF connector and press to make it securely attached.



Replacement

4.12 Label

Follow the 3.1 – 3.2 Disassembly instructions!
Carry out the Removal as described below.
Prepare a new Label.
Carry out the Installation as described below.
Follow the 5.6 – 5.7 Reassembly instructions!

REMOVAL

Read the old Label content and write the information into the Label Print Solution' software.
Carefully peel off and remove the Label.

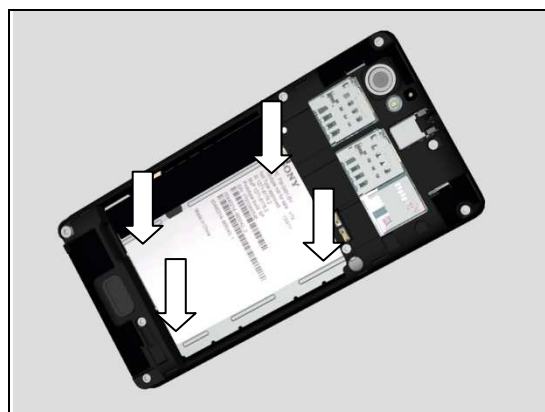
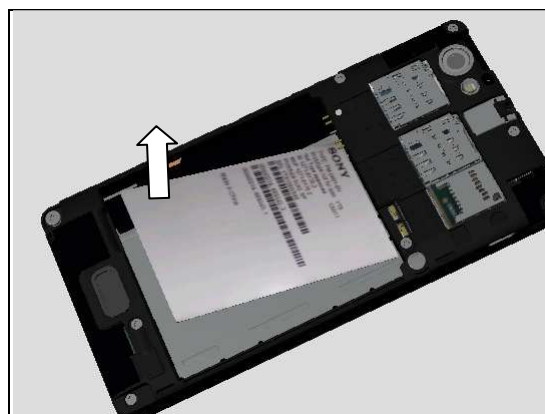
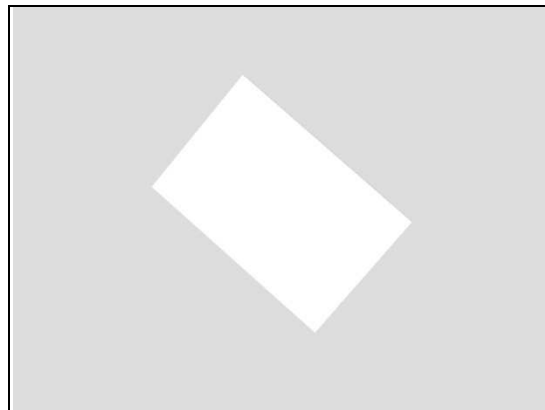
Scrap! Not to be reused!

INSTALLATION

Check that the proper label format is loaded in the Zebra printer and write a new label by using the 'Label Print Solution' software.
Attach the new Label on its proper position aligning by the guide line as shown in picture.

Press along the surface of the Label to make it securely attached.

One label only is allowed!



Replacement

4.13 Light Bar Gasket

Follow the 3.1 – 3.3, 3.5 Disassembly instructions!

Carry out the Removal as described below.

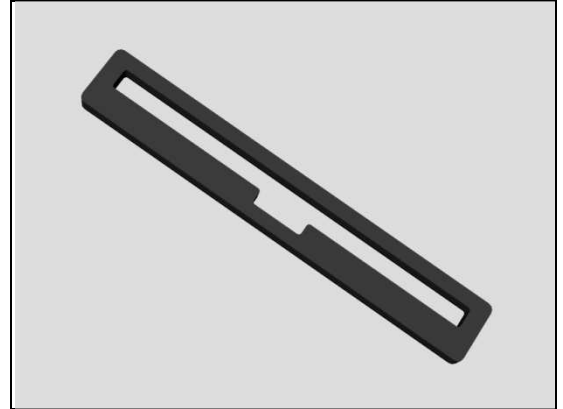
Prepare the new Light Bar Gasket.

Carry out the Installation as described below!

Follow the 5.1, 5.3 – 5.5 Reassembly instructions!

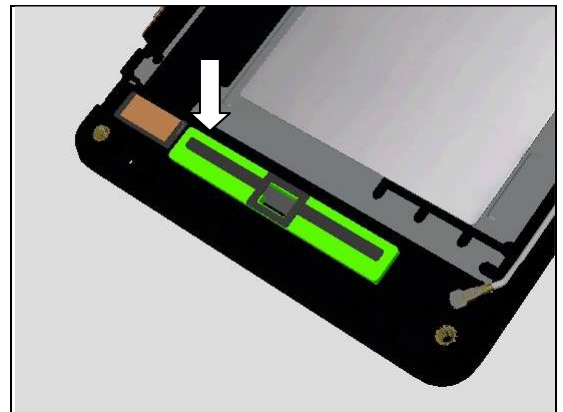
REMOVAL

Remove it from the Front Cover Assy by using Flex Film Assembly Tool.



INSTALLATION

Place the Light Bar Gasket in its proper position and press to make it securely attached.



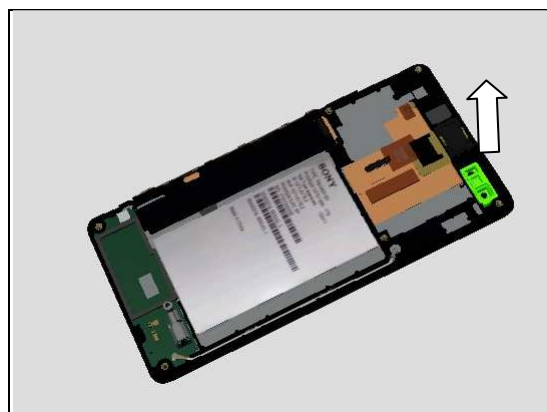
Replacement

4.14 Light Pipe Sensor & Rubber Sensor

Follow the 3.1 – 3.4 Disassembly instructions!
 Carry out the Removal as described below.
 Prepare the new Light Pipe Sensor& Rubber Sensor.
Carry out the Installation as described below!
 Follow the 5.2 – 5.5 Reassembly instructions!

REMOVAL

Use the dentist hook to remove the Light Pipe Sensor& Rubber Sensor.

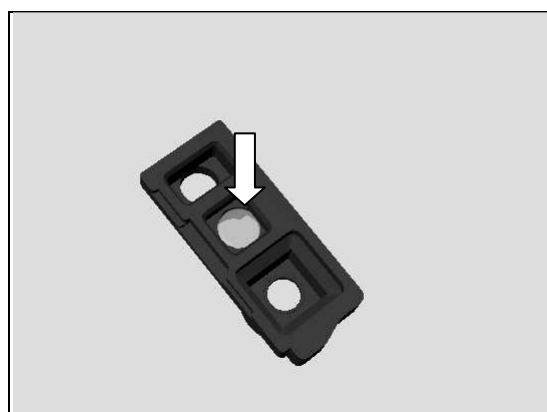


INSTALLATION

Prepare new Light Pipe Sensor& Rubber Sensor.

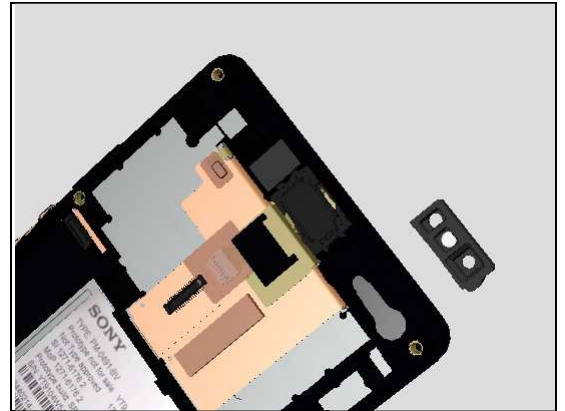


Insert the Light Pipe Sensor into the hole of Rubber Sensor as shown.

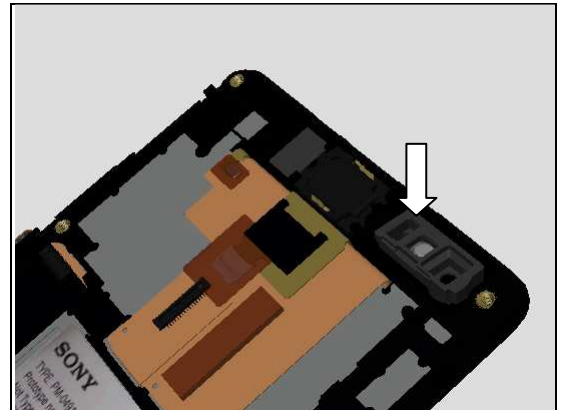


Replacement: Light Pipe Sensor & Rubber Sensor

Note the orientation of the Light Pipe Sensor & Rubber Sensor to be installed.



Place the Light Pipe Sensor & Rubber Sensor into cavity and press on the top to secure its position..



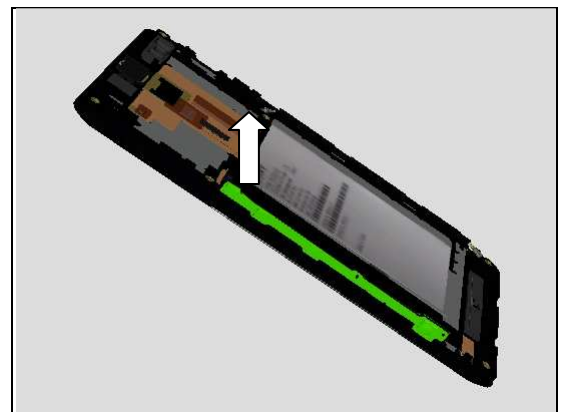
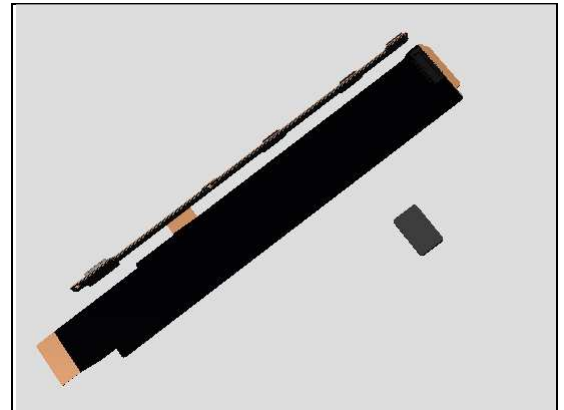
Replacement

4.15 Link FPC & Link FPC Gasket

Follow the 3.1 – 3.5 Disassembly instructions!
 Carry out the Removal as described below.
 Prepare the new Link FPC & Link FPC Gasket.
Carry out the Installation as described below!
Follow the 5.1 – 5.5 Reassembly instructions!

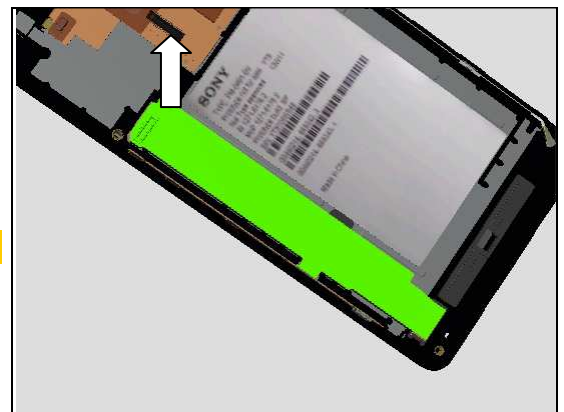
REMOVAL

Use the Front Opening Tool to release the Side Key part of Link FPC from the Front Cover Assy gently.



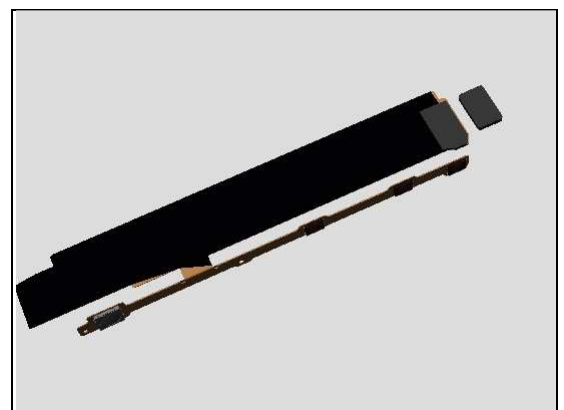
Use the Front Opening Tool to release the Link FPC from the Front Cover Assy.

Make sure no residue remains on the Front Cover Assy!



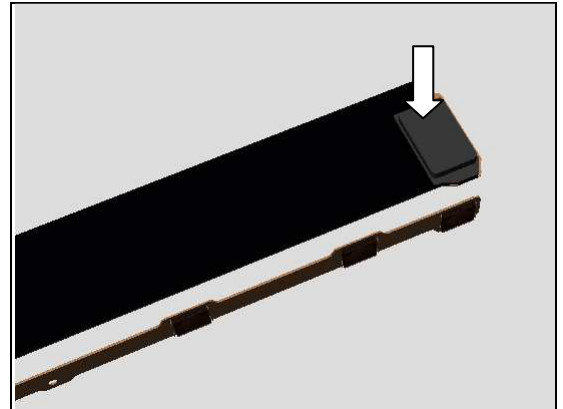
INSTALLATION

Attach a new Link FPC Gasket on the back side of BtB connector.



Replacement: Link FPC & Link FPC Gasket

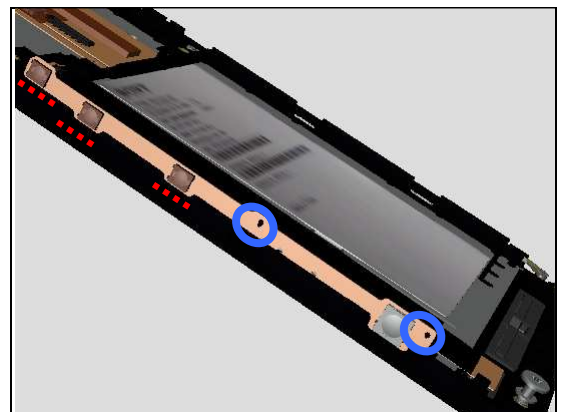
Press to secure its position.



Place the Link FPC Gasket B into its corresponding position as guiding shown in the picture.



Attach the Side Key FPC according to guiding poles as shown.



Press along the side key part of the Link FPC gently to make it securely attached.



Replacement: Link FPC & Link FPC Gasket

Do the same to the rest part of Link FPC.



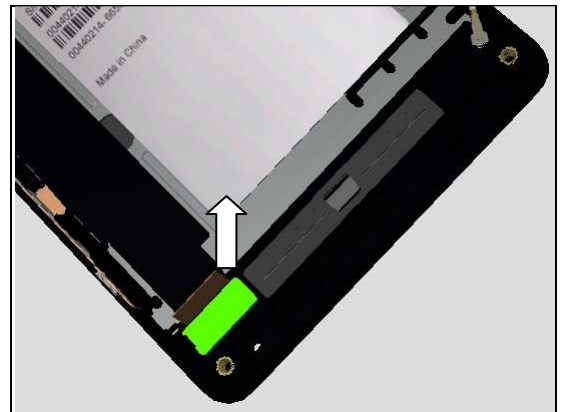
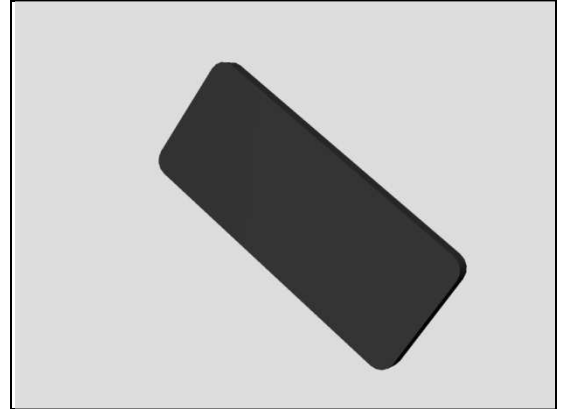
Replacement

4.16 Link FPC Gasket B

Follow the 3.1 – 3.3, 3.5 Disassembly instructions!
Carry out the Removal as described below.
Prepare the new Link FPC Gasket B.
Carry out the Installation as described below!
Follow the 5.1, 5.3 – 5.5 Reassembly instructions!

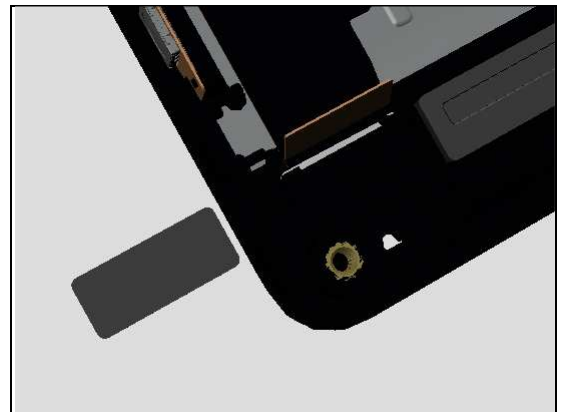
REMOVAL

Detach to remove it by using tweezers.

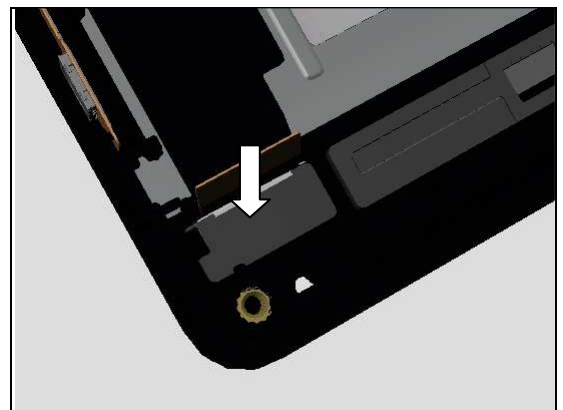


INSTALLATION

Place the Link FPC Gasket B into its corresponding position



Press to secure its position.



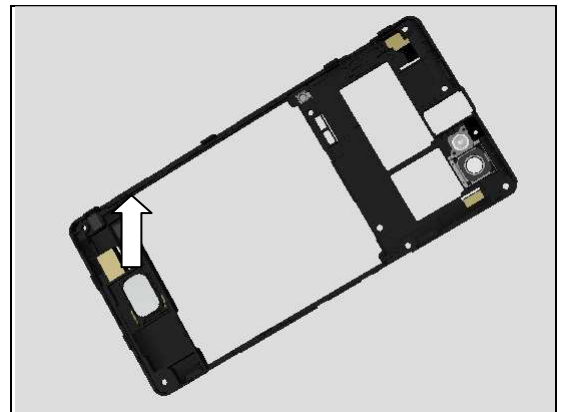
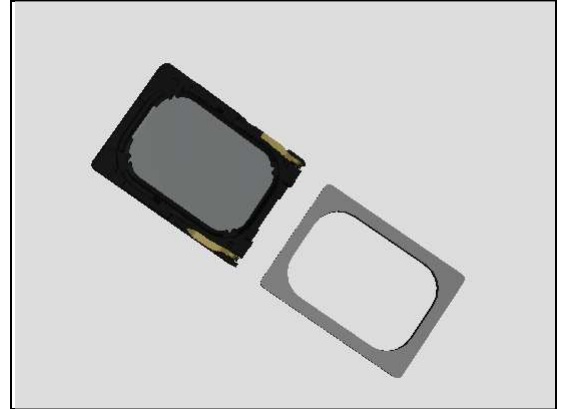
Replacement

4.17 Loudspeaker & Speaker Gasket

Follow the 3.1 – 3.3 Disassembly instructions!
Carry out the Removal as described below.
Prepare the new Loudspeaker & Speaker Gasket.
Carry out the Installation as described below!
Follow the 5.3 – 5.5 Reassembly instructions!

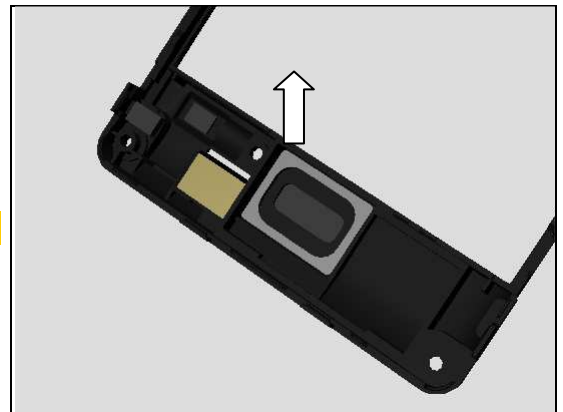
REMOVAL

Insert the Front Opening Tool from left side and pull upwards to release the Loudspeaker.



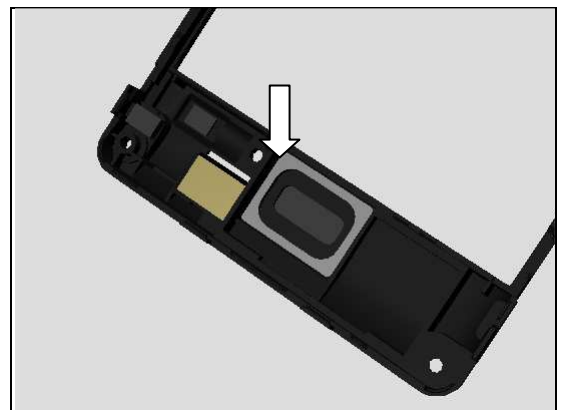
Detach to remove the Speaker Adhesive.

Remove the residue until its clean!



INSTALLATION

Attach the new Speaker Adhesive into the cavity as shown.



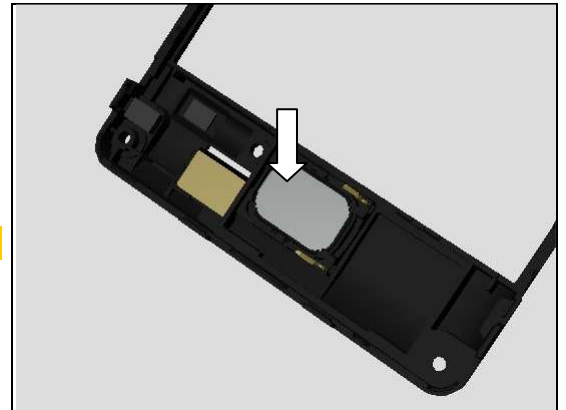
Replacement: Loudspeaker & Speaker Gasket

Note the orientation of the Loudspeaker to be installed.



Place the Loudspeaker into the cavity and press the surface to secure its attachment.

Do not touch the pins!



Replacement

4.18 Main Camera 5M&Camera Connector Mylar Tape&Camera Gasket

Follow the 3.1 – 3.4 Disassembly instructions!

Carry out the Removal as described below.

Prepare the new Main Camera 5M & Camera Connector Mylar Tape & Camera Gasket.

Carry out the Installation as described below!

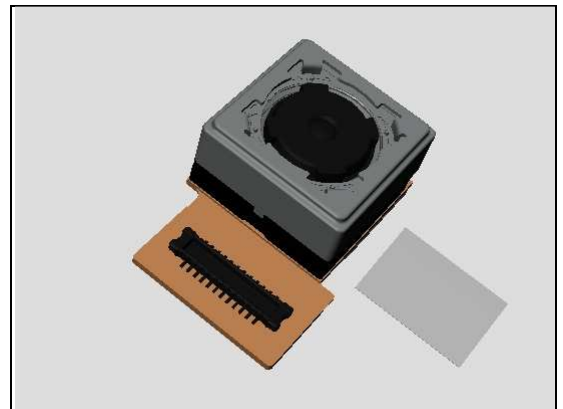
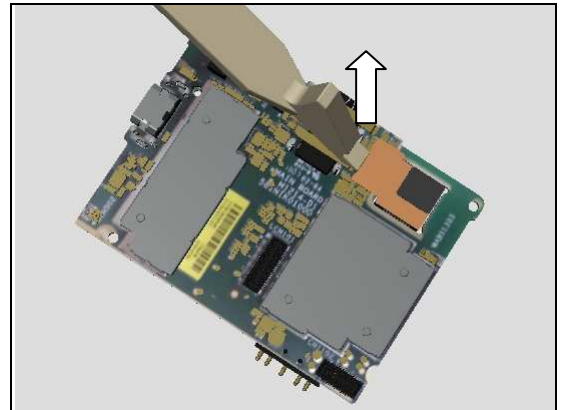
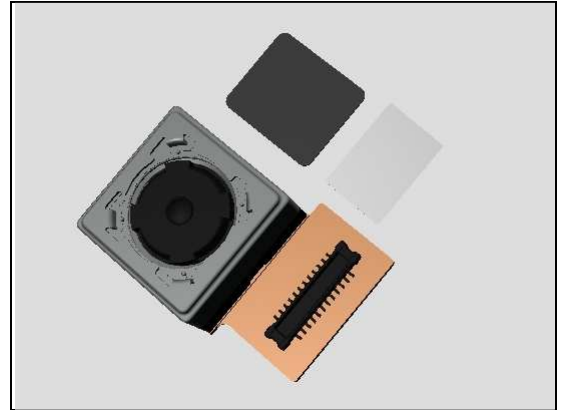
Follow the 5.2 – 5.5 Reassembly instructions!

REMOVAL

Unsnap the BtB connector to remove the Main Camera 5M by using Front Opening Tool as shown.

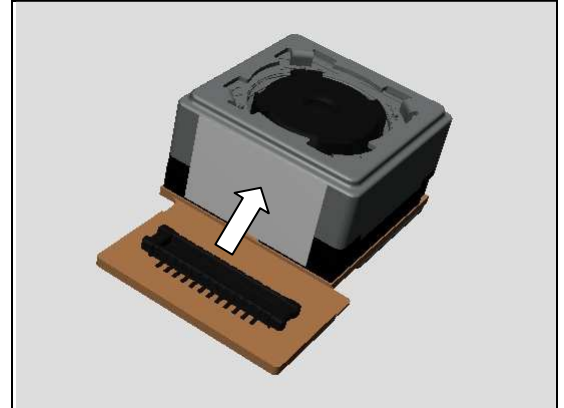
INSTALLATION

Prepare the Main Camera 5M and Camera Connector Mylar Tape in place.

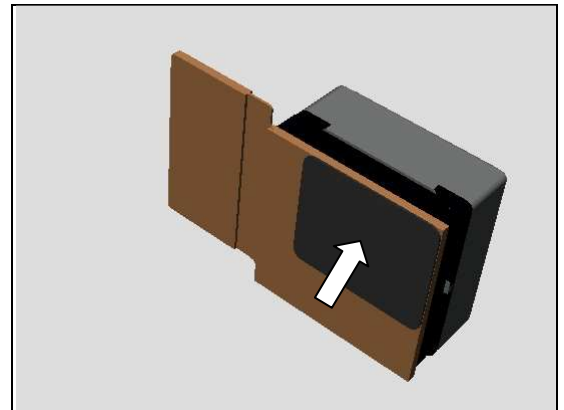


Replacement: Main Camera 5M & Camera Connector Mylar Tape & Camera Gasket

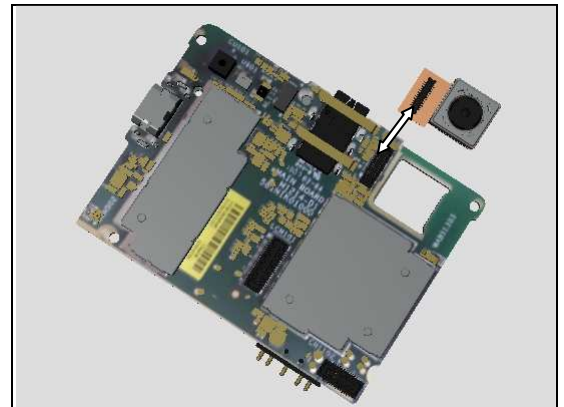
Attach the Camera Connector Mylar Tape onto the Main Camera 5M as shown.



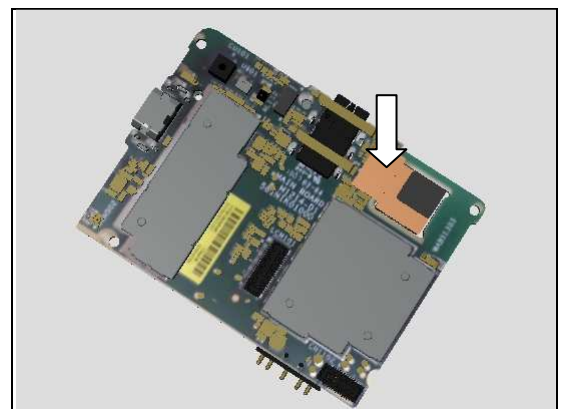
Attach the Camera Gasket onto the bottom of the Main Camera 5M as shown.



Place the Main Camera 5M next to the Main PBA



Put the head of Main Camera 5M into the hole and press to snap the BtB connector as shown in the picture.



Replacement

4.19 Microphone Rubber & Microphone Mesh

Follow the 3.1 – 3.3, 3.5 Disassembly instructions!
Carry out the Removal as described below!
 Prepare the new Microphone Rubber & Microphone Mesh.
Carry out the Installation as described below!
Follow the 5.1, 5.3 – 5.5 Reassembly instructions!

REMOVAL

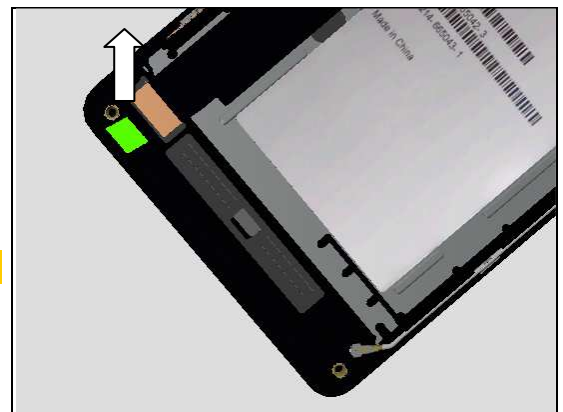
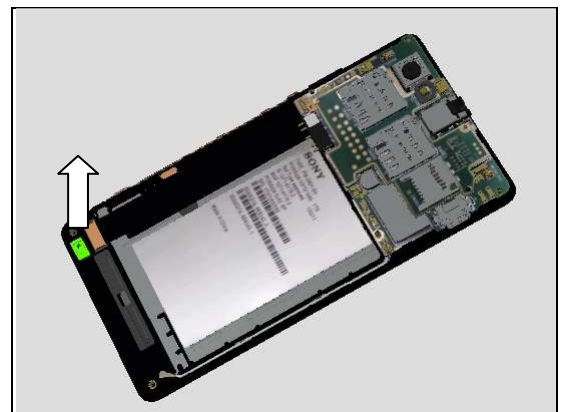
Remove the Microphone Rubber by using Flex Film Assembly Tool.

Peel off the Microphone Mesh by using the Flex Film Assembly Tool.

Remove the residue until its clean!

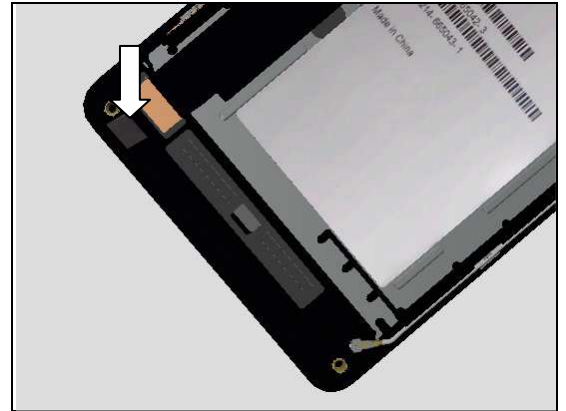
INSTALLATION

Place the Microphone Mesh into its corresponding hole.



Replacement: Microphone Rubber & Microphone Mesh

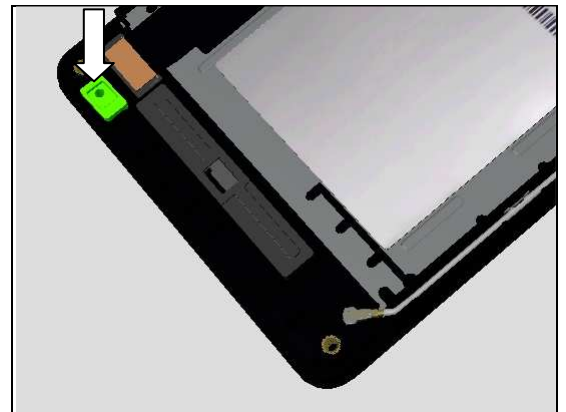
Press to secure its attachment.



Place the Microphone Rubber into its corresponding hole.



Press to secure its position.



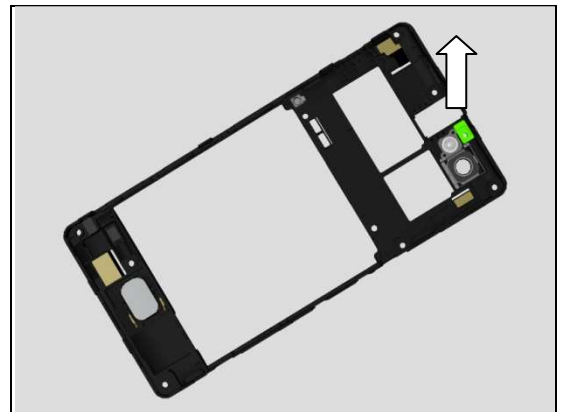
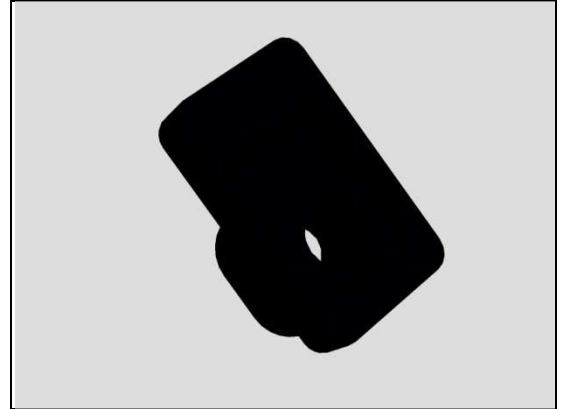
Replacement

4.20 2nd Microphone Rubber

Follow the 3.1 – 3.3 Disassembly instructions!
Carry out the Removal as described below!
Prepare the new 2nd Microphone Rubber.
Carry out the Installation as described below!
Follow the 5.3 – 5.5 Reassembly instructions!

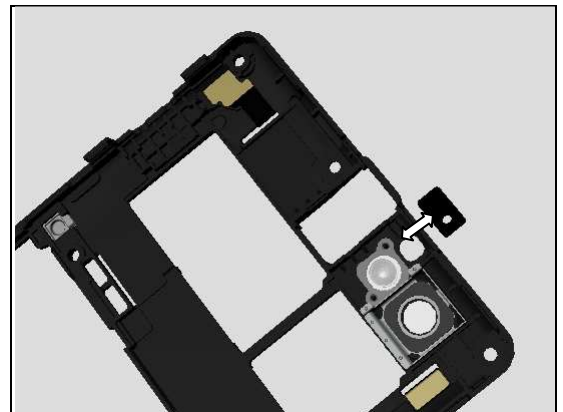
REMOVAL

Detach to remove it.

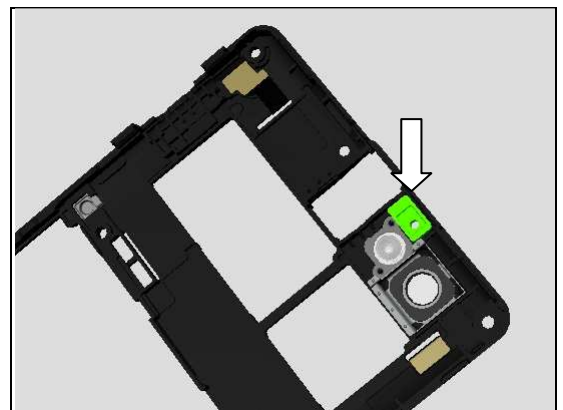


INSTALLATION

Place the 2nd Microphone Rubber into its corresponding hole.



Press to secure its position.



Replacement

4.21 Rear Cover

Follow the 3.1 – 3.3 Disassembly instructions!

Follow the 4.17, 4.20, 4.23 Removal instructions!

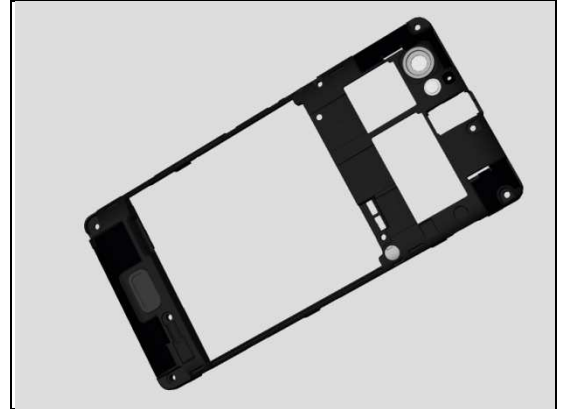
Carry out the Removal as described below!

Prepare the new Rear Cover.

Carry out the Installation as described below!

Follow the 4.17, 4.20, 4.23 Installation instructions!

Follow the 5.3 – 5.5 Reassembly instructions!



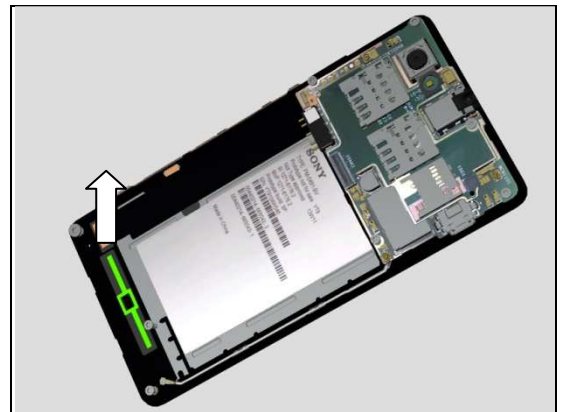
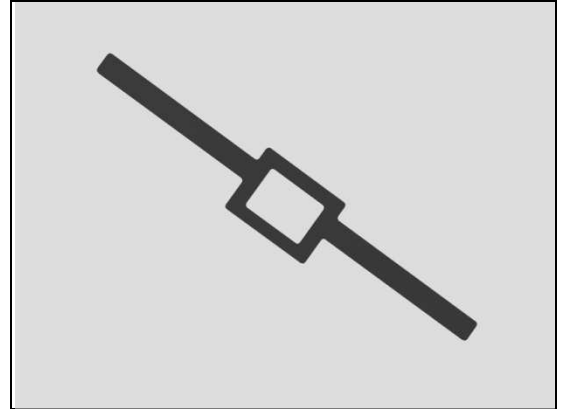
Replacement

4.22 Reflective Sheet

Follow the 3.1 – 3.3, 3.5 Disassembly instructions!
Carry out the Removal as described below!
Prepare the new Reflective Sheet.
Carry out the Installation as described below!
Follow the 5.1, 5.3 – 5.5 Reassembly instructions!

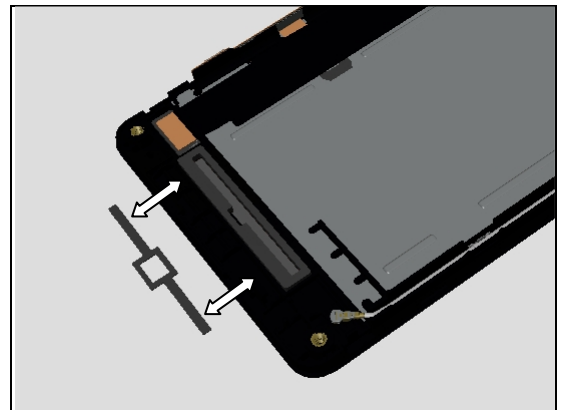
REMOVAL

Detach to remove it by using tweezers.

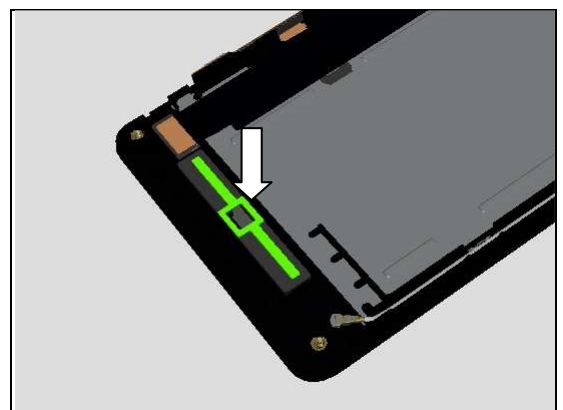


INSTALLATION

Place the Reflective Sheet into its corresponding position



Press to secure its position.



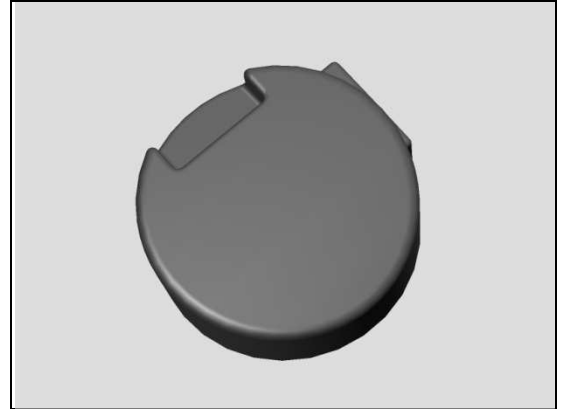
Replacement

4.23 RF Port Rubber

Follow the 3.1 – 3.2 Disassembly instructions!
Carry out the Removal as described below!
Prepare the new RF Port Rubber.
Carry out the Installation as described below!
Follow the 5.4 – 5.5 Reassembly instructions!

REMOVAL

Insert the tweezers into the hole and pull upwards to remove the RF Port Rubber.



INSTALLATION

Note the orientation of the RF Port Rubber to be installed.



Place the RF Port Rubber into its corresponding hole and press to secure its position.



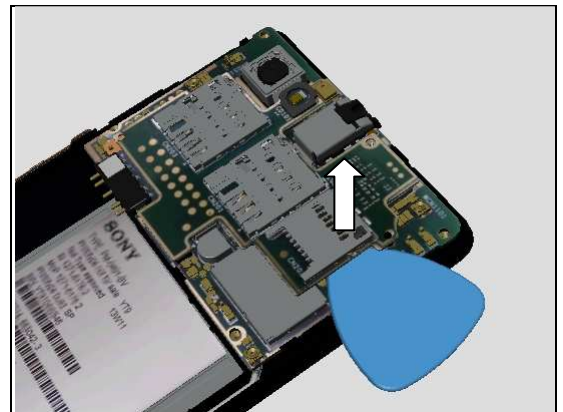
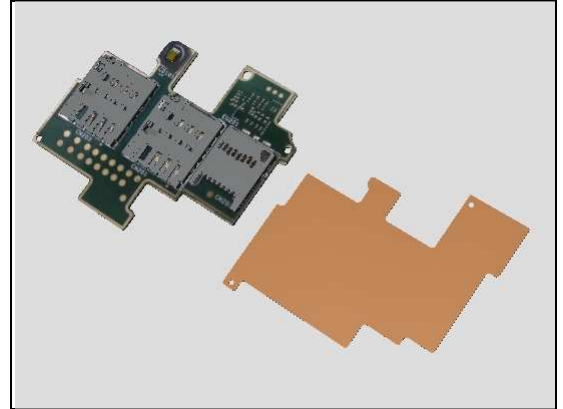
Replacement

4.24 SIM Board & SIM Board Adhesive

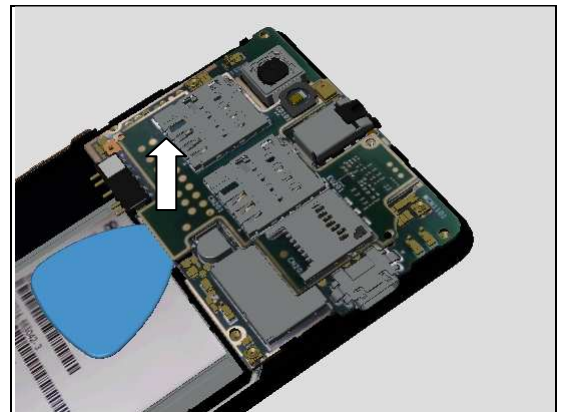
Follow the 3.1 – 3.3 Disassembly instructions!
Carry out the Removal as described below!
Prepare the new SIM Board & SIM Board Adhesive
Carry out the Installation as described below!
Follow the 4.9 Installation instructions!
Follow the 5.3 – 5.5 Reassembly instructions!

REMOVAL

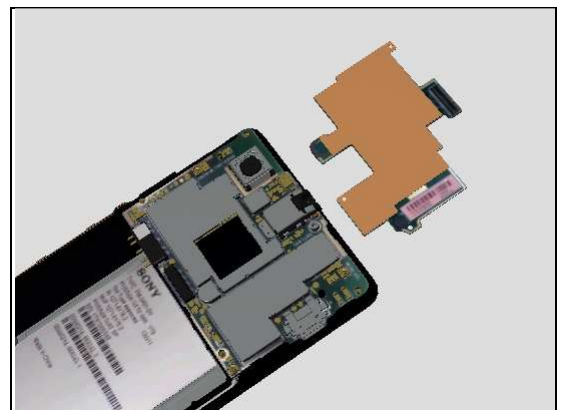
Insert the Guitar Pick underneath the SIM Board and pull gently upwards to release it from left side.



Release the BtB connector.



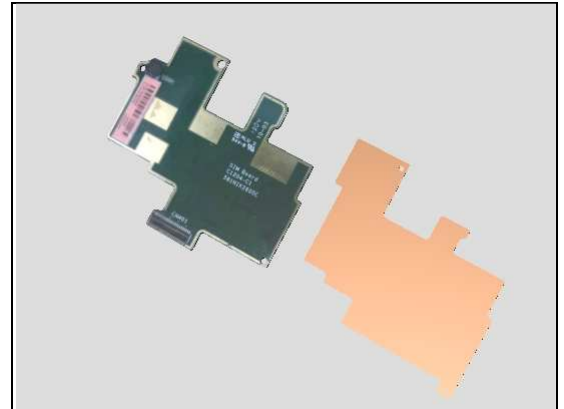
Remove the SIM Board from Main PBA.



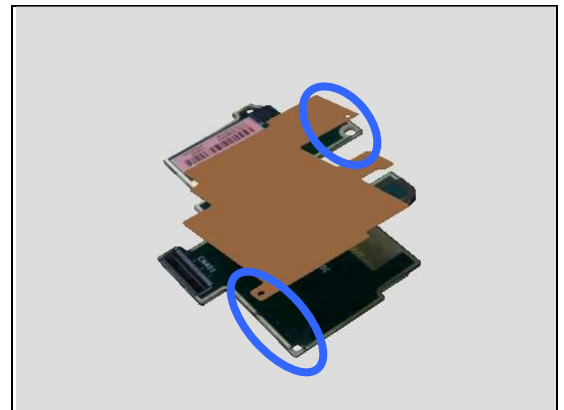
Replacement: SIM Board & SIM Board Adhesive

INSTALLATION

Place a new SIM Board and SIM Board Adhesive into proper place.



Attach the SIM Board Adhesive onto the back side of SIM Board align to the guiding holes as shown



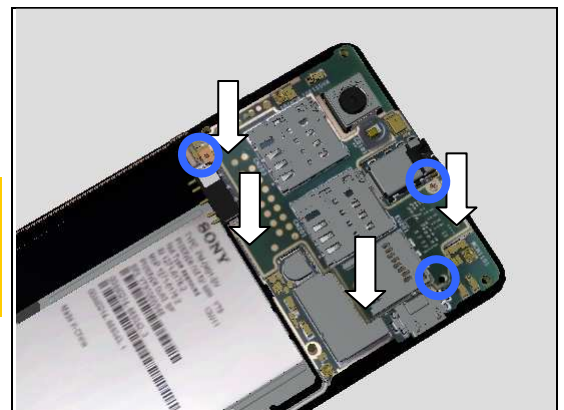
Prepare the assembled SIM Board.



Attach the SIM Board on the Main PBA align to the guiding holes as shown and press to snap the BtB connector.

G-sensor Calibration should be performed after replacing SIM Board.

For G-sensor Calibration, refer to 1277-8589 Test and Calibration.



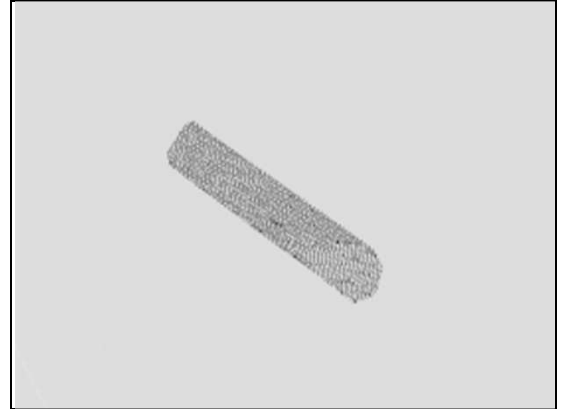
Replacement

4.25 Speaker Mesh

Follow the 3.1 Disassembly instructions!
Carry out the Removal as described below!
Prepare the new Speaker Mesh.
Carry out the Installation as described below!
Follow the 5.5 Reassembly instructions!

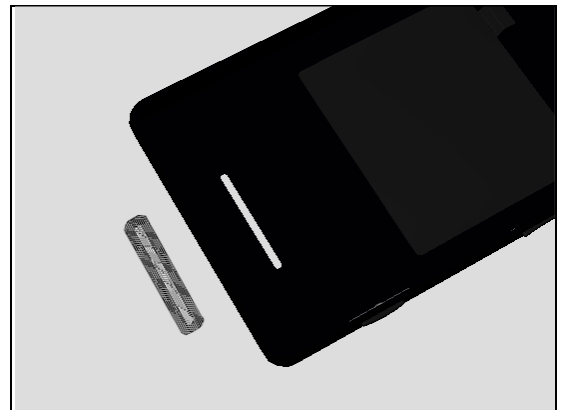
REMOVAL

Push from outside to release it by using tweezers.



INSTALLATION

Attach a new Speaker Mesh align the frame.



Press to secure its attachment.



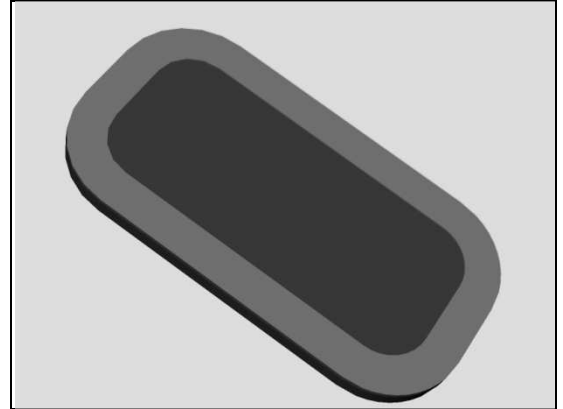
Replacement

4.26 Speaker Mesh on Rear Cover

Follow the 3.1 – 3.2 Disassembly instructions!
Carry out the Removal as described below!
Prepare the new Speaker Mesh on Rear Cover.
Carry out the Installation as described below!
Follow the 5.4 – 5.5 Reassembly instructions!

REMOVAL

Detach to remove it.



INSTALLATION

Attach a new Speaker Mesh on Rear Cover align the frame.



Press to secure its attachment.



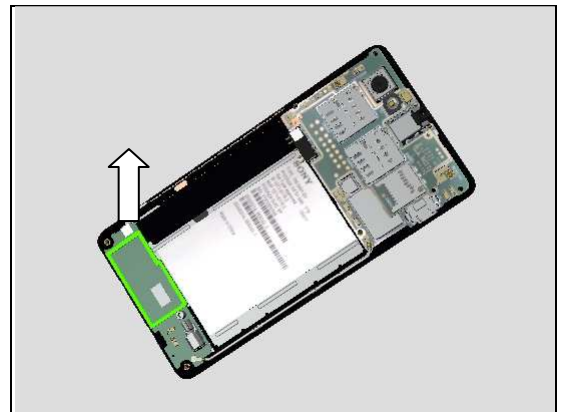
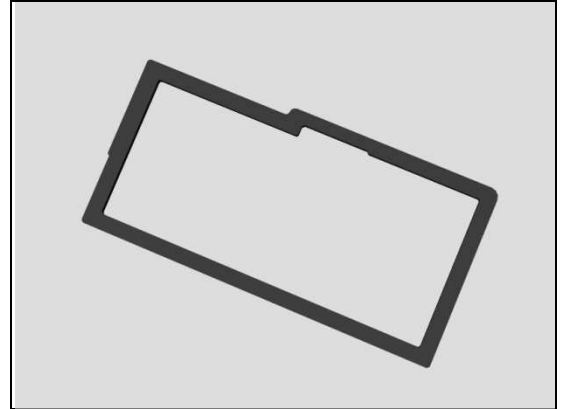
Replacement

4.27 Speaker Sponge

Follow the 3.1 – 3.3 Disassembly instructions!
Carry out the Removal as described below!
Prepare the new Speaker Sponge.
Carry out the Installation as described below!
Follow the 5.3 – 5.5 Reassembly instructions!

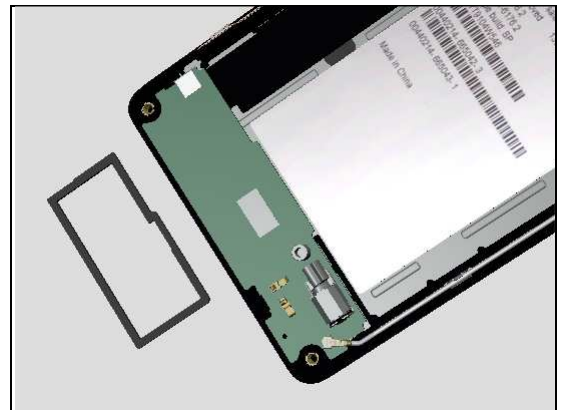
REMOVAL

Detach to remove it.

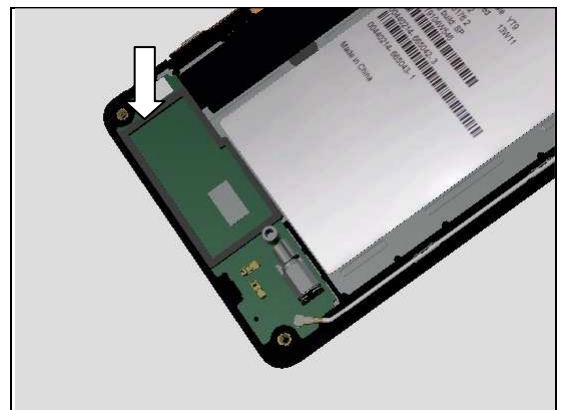


INSTALLATION

Place a new Speaker Sponge in place.



Attach it onto the ANT Board align the frame and press along to secure the attachment.



Replacement

4.28 Touch Panel & Touch Panel Adhesive

Follow the 3.1 – 3.5. Disassembly instructions!

Carry out the Removal as described below!

Follow the 4.7 Removal instructions!

Prepare the new Touch Panel & Touch Panel Adhesive & Front Cover Assy.

Follow the 4.7 Installation instructions

Carry out the Installation as described below!

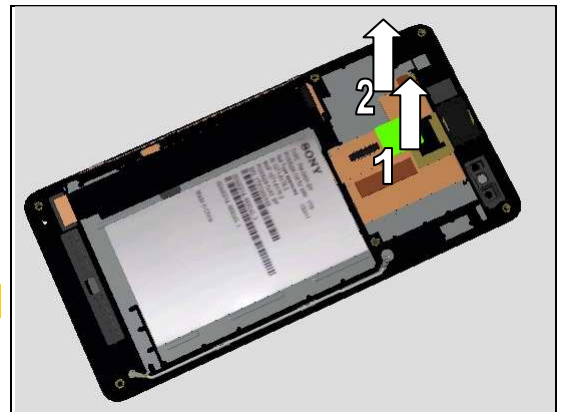
Follow the 5.1 – 5.5. Reassembly instructions!



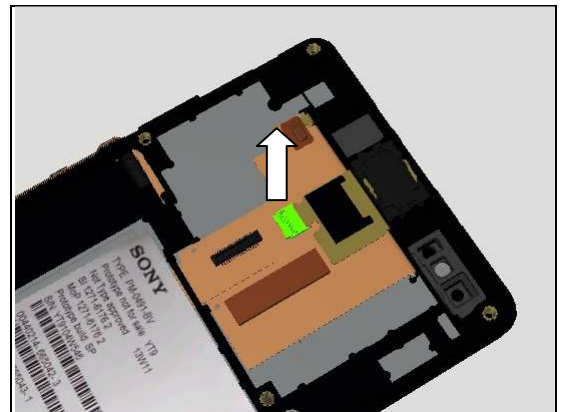
REMOVAL

Detach to remove the Kapton Tape TP connector and Kapton Tape Display FPC on the corner of FPC by using the Flex Film Assembly Tool.

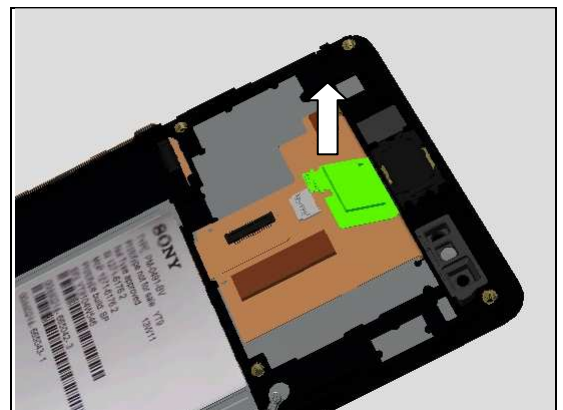
Do not damage the Touch Panel FPC!



Unlock the ZIF connector.



Release the Touch Panel FPC from ZIF connector and gently release it from adhesive underneath.



Replacement: Touch Panel & Touch Panel Adhesive

Turn the Unit over to the other side.



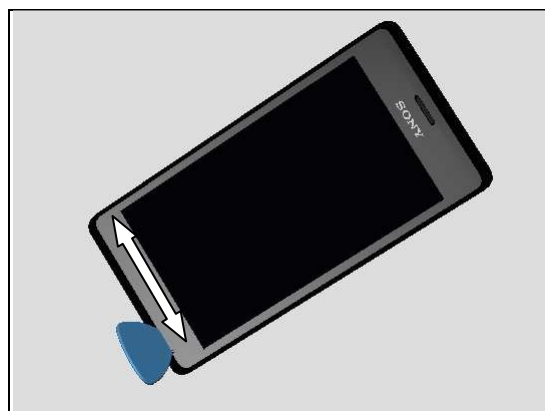
Insert the Guitar Pick into the left bottom corner and slide to release the left side of Touch Panel.

Be careful of the Front Cover Assy, If the Touch Panel cracks during this operation, stop to disassemble the unit right away and reassemble with new parts!



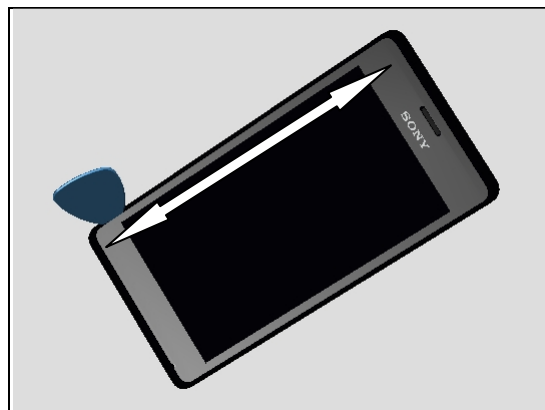
Insert the Guitar Pick slide back and force to release the bottom side.

Be careful of the Front Cover Assy, If the Touch Panel cracks during this operation, stop to disassemble the unit right away and reassemble with new parts!



Do the same for another two sides as shown.

Be careful of the Front Cover Assy, If the Touch Panel cracks during this operation, stop to disassemble the unit right away and reassemble with new parts!



Replacement: Touch Panel & Touch Panel Adhesive

Raise the bottom of the Touch Panel at 30° approximately to release the top side gently.

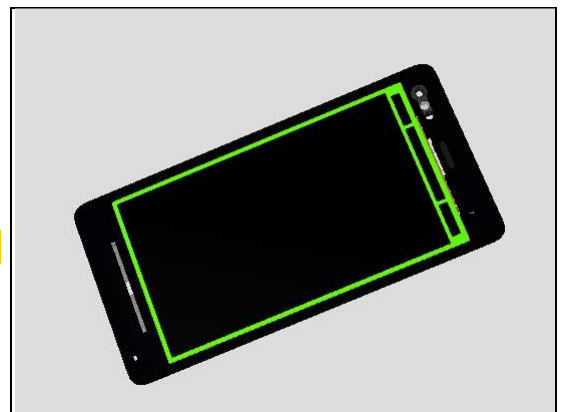


Pull to remove the Touch Panel FPC and the Touch Panel through the hole.



Remove the Touch Panel Adhesive and clean the residue until it's clean.

Make sure no residue remains!



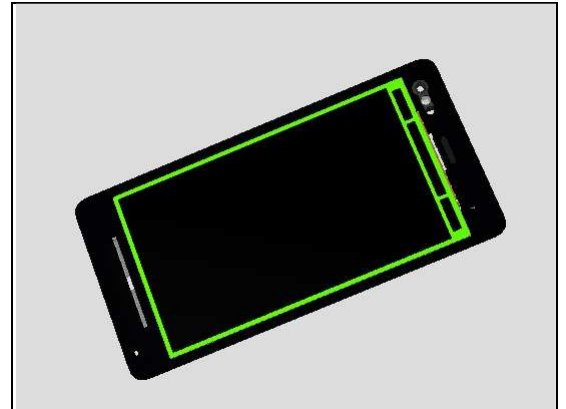
INSTALLATION

Put a new Touch Panel Adhesive in place.



Replacement: Touch Panel & Touch Panel Adhesive

Attach the Touch Panel Adhesive align the LCD Frame firmly.



Place a new Touch Panel in place.

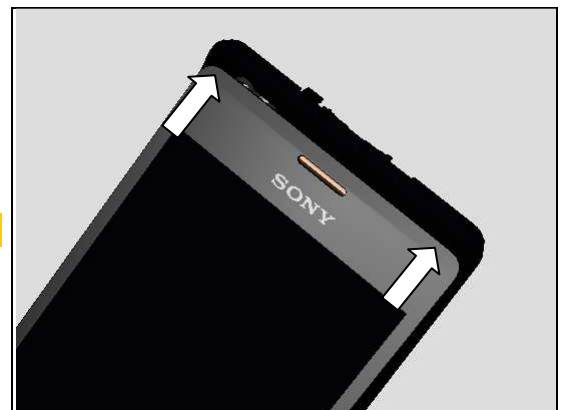


Insert the Touch Panel through the hole on the top side.



Place the top side of Touch Panel align the LCD Frame.

Do not touch the Touch Panel Adhesive!



Replacement: Touch Panel & Touch Panel Adhesive

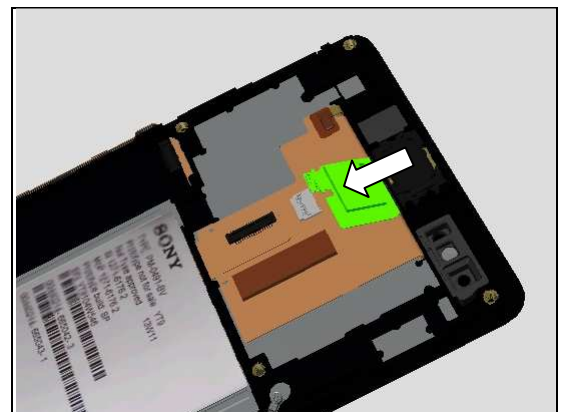
Turn the Touch Panel back to horizontal position align the frame.



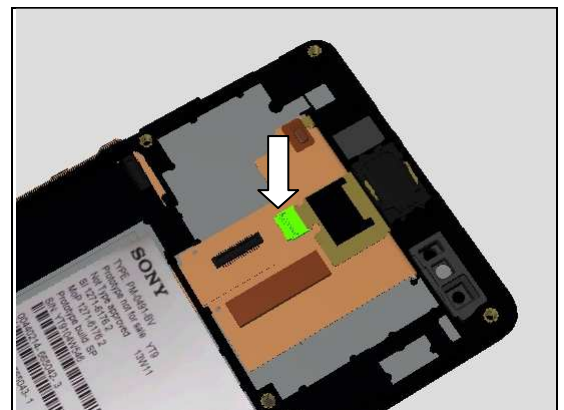
Press the surface to make it securely attached.



Turn over the Unit and insert the Touch Panel FPC into ZIF connector.

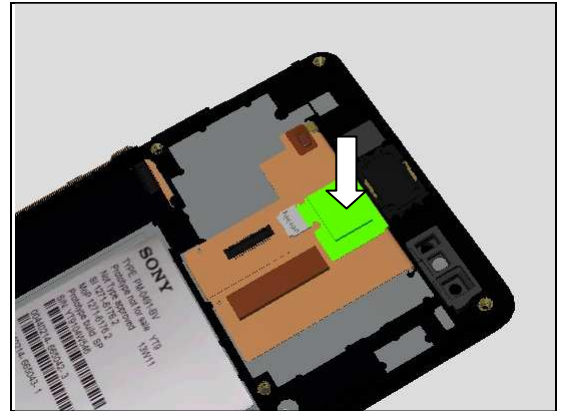


Lock the ZIF connector.

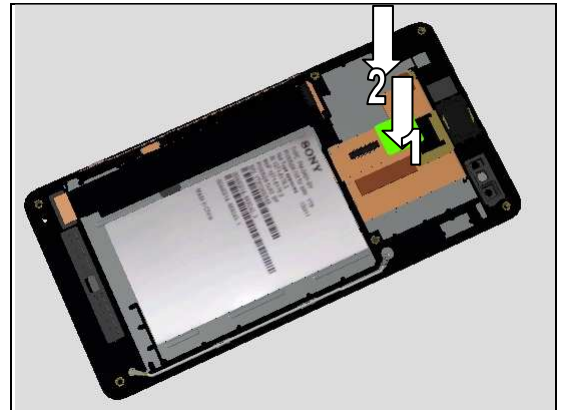


Replacement: Touch Panel & Touch Panel Adhesive

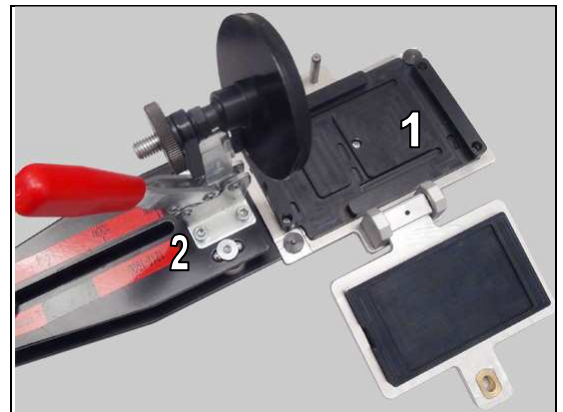
Press the FPC surface to make it securely attached.



Attach a new Kapton Tape TP connector cover the ZIF connector and Kapton Tape Display FPC on the corner of FPC.
press them to make it securely attached.



Fasten the Touch Panel Pressure Fixture (1) to the Pressure tool (2).

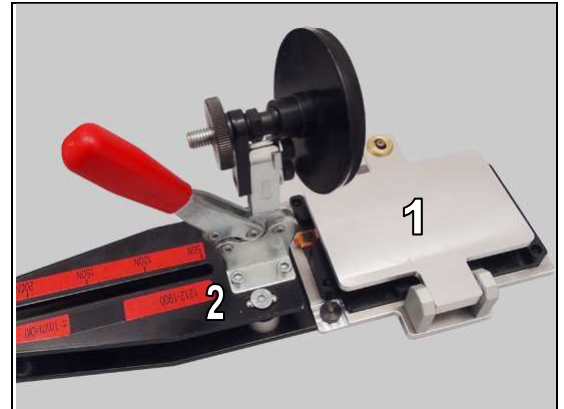


Place the Unit into the Touch Panel Pressure Fixture (1) as shown.

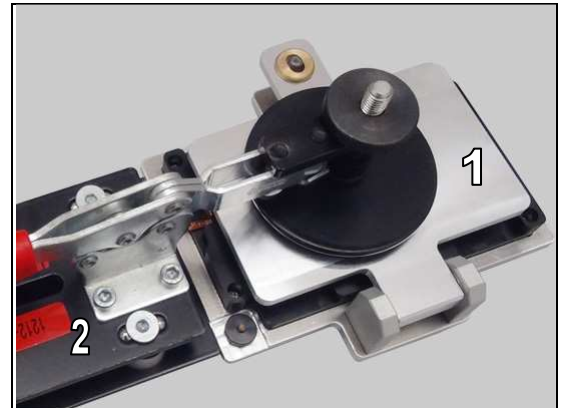


Replacement: Touch Panel & Touch Panel Adhesive

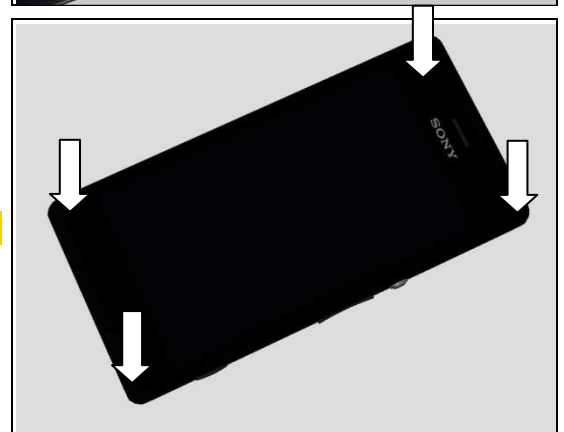
Fasten the Phone in the Touch Panel Pressure Fixture (1).



Press the handle of the Pressure Tool (2) with a pressure value of 220 ± 20 Ncm for 20 seconds.



Make sure its four sides are securely pressed!



Replacement

4.29 Water Indicator

INSPECTION

To check whether the Water Indicator has been activated (reddish colour), just remove the Battery Cover Assy.

If activated:

Follow the 3.1 – 3.3 Disassembly instructions!

Carry out the replacement as described below.

Follow the 5.3 – 5.5 Reassembly instructions!

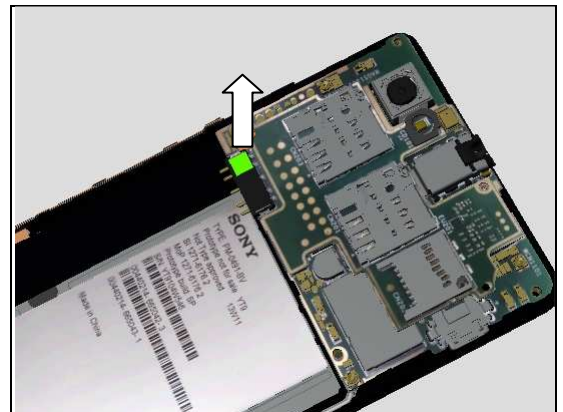


REMOVAL

There are two Water Indicator locate on the phone as shown.



Peel off the Water Indicator by using the Flex Film Assembly Tool.



INSTALLATION

Place the water indicator aligns to the edge of battery connector and press to make it securely attached.



Replacement: Water Indicator

Do the same for the other Water Indicator.



Replacement

4.30 Volume Key

Follow the 3.1 Disassembly instructions!
Carry out the Removal as described below!
Prepare the new Volume Key.
Carry out the Installation as described below!
Follow the 5.5 Reassembly instructions!

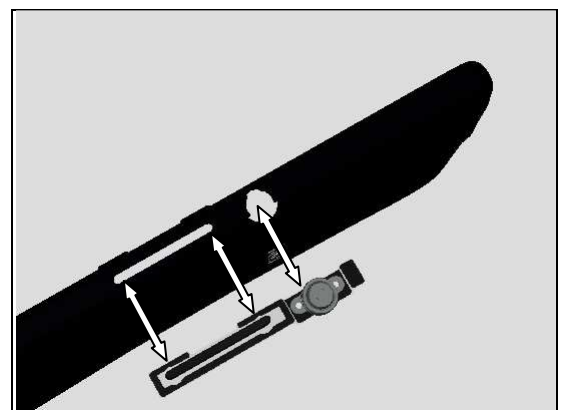
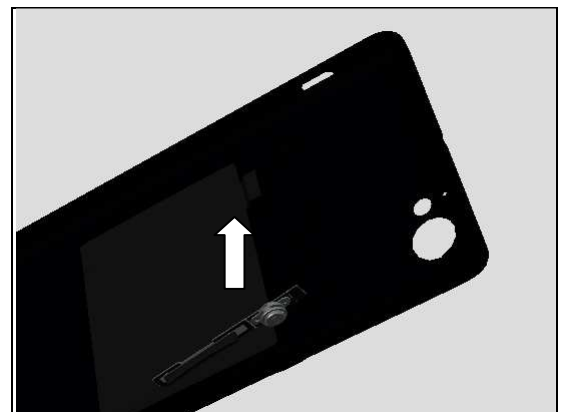
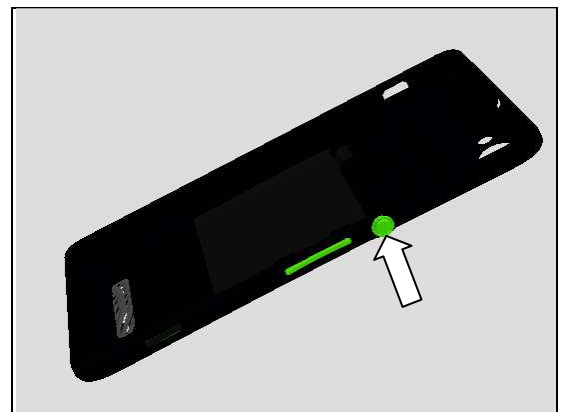
REMOVAL

Push with the tweezers on the Volume Key from outside until the key becomes released.

Remove it.

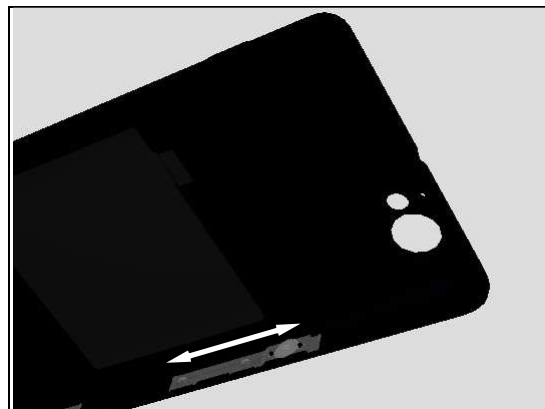
INSTALLATION

Place the Volume Key into proper place.



Replacement: Volume Key

Press along the surface until its properly installed as shown from the inside.



Replacement

4.31 Board Swap - Replacement

Follow the 3.1 – 3.5 Disassembly instructions!

Follow the 4.18, 4.24 Removal instructions!

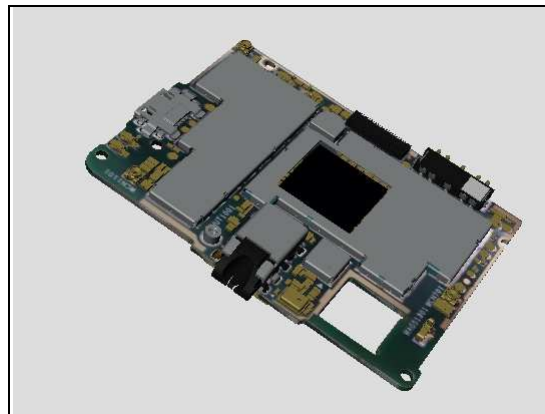
Replace the Swap Board.

Follow the 4.18, 4.24 Installation instructions!

Follow the 5.1 – 5.5 Reassembly instructions!

G-sensor Calibration should be performed after replacing SIM Board.

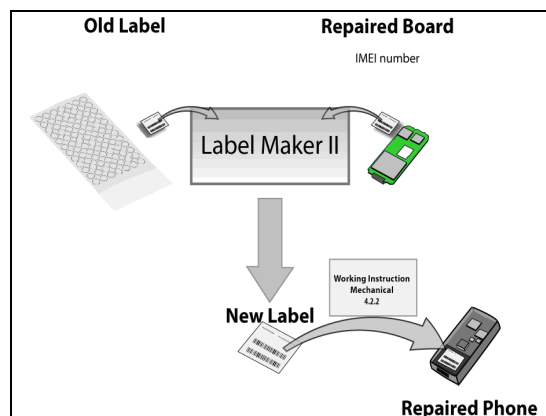
For G-sensor Calibration, refer to 1277-8589 Test and Calibration.



4.32 Board Swap – Change Label

CHANGE LABEL

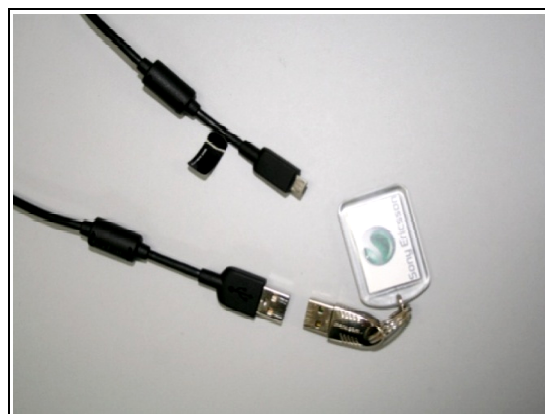
Follow the instructions in the Generic Repair Manual – Build swap for change of label.



4.33 Board Swap – Customize of Software

CUSTOMIZE OF SOFTWARE

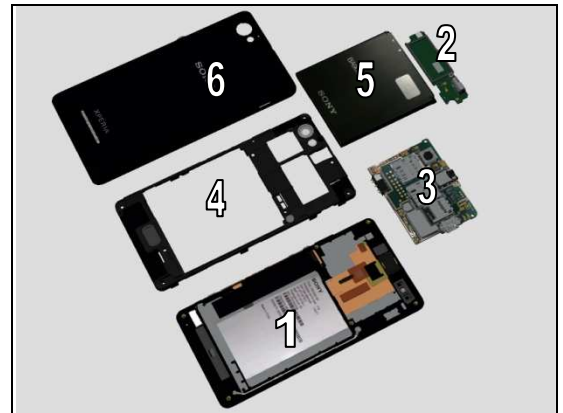
Follow the instructions in the Generic Repair Manual – Build swap for customization of the software.



5 Reassembly

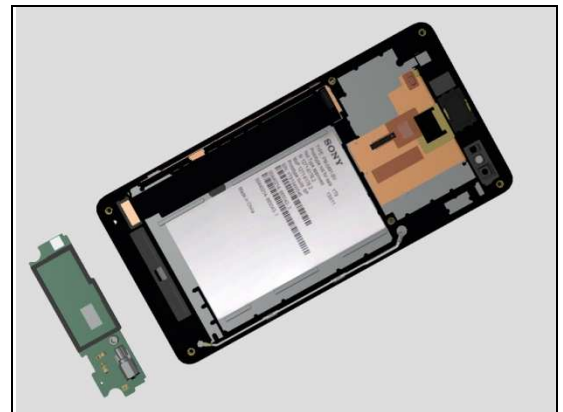
The reassembly is done in the following order:

1. Front Cover Assy
2. ANT Board
3. Main PBA
4. Rear Cover Assy
5. Battery
6. Battery Cover Assy



5.1 Front Cover Assy& ANT Board

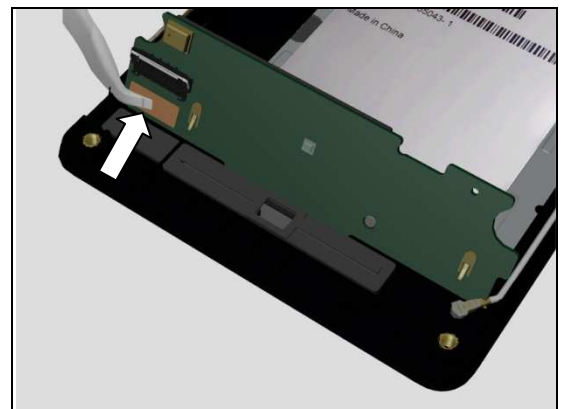
Prepare Front Cover Assy and ANT Board in place.



Put the ANT Board vertically on the Front Cover Assy as shown in picture.

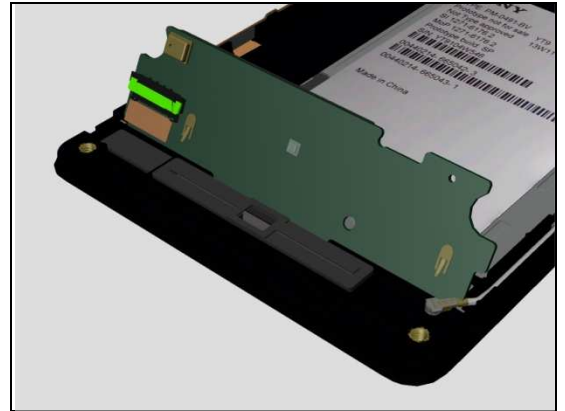


Insert FPC head into ZIF connector by using Flex Film Assembly Tool.

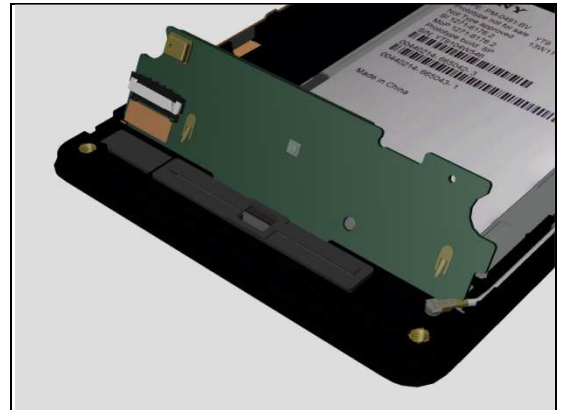


Reassembly

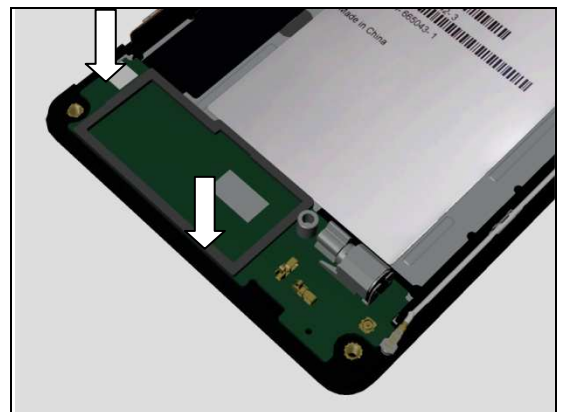
Lock it.



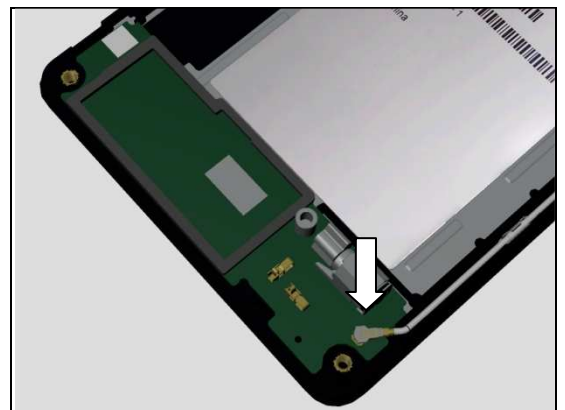
Turn the ANT Board back to its horizontal position



Press to snap the ANT Board.



Connect the Coax Cable



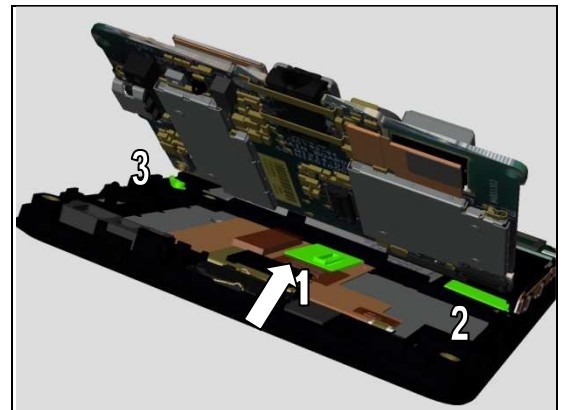
Reassembly

5.2 Main PBA

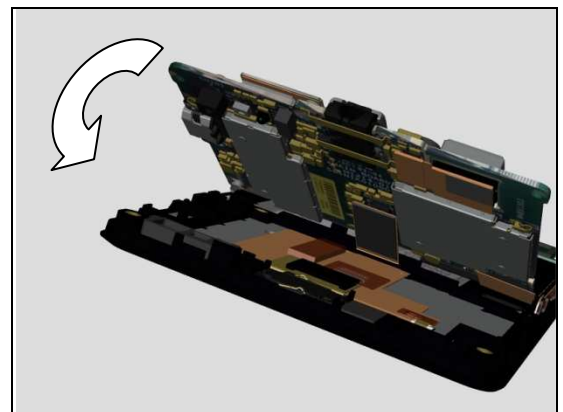
Place the Main PBA onto the Front Cover Assy as shown



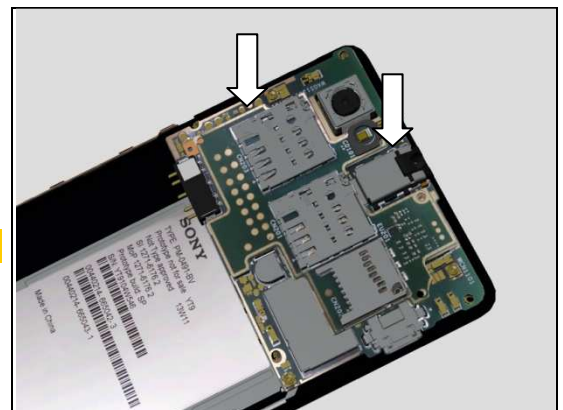
Connect the three connectors with finger as picture shown.



Turn the Main PBA back to its horizontal position.



Press to snap the two hooks to secure its position.



Be careful of Antenna Pins!

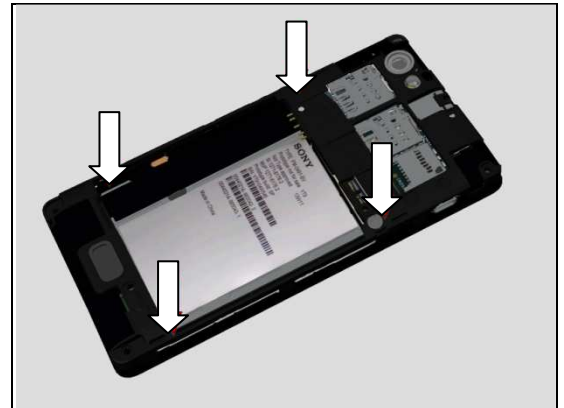
Reassembly

5.3 Rear Cover Assy

Place the Rear Cover Assy on top of the Main PBA in its proper position.



Press the four sides to snap.



Apply 7~9 Ncm torque when tightening the Screw M1.4*2.4 with Bits (JCIS No 0).

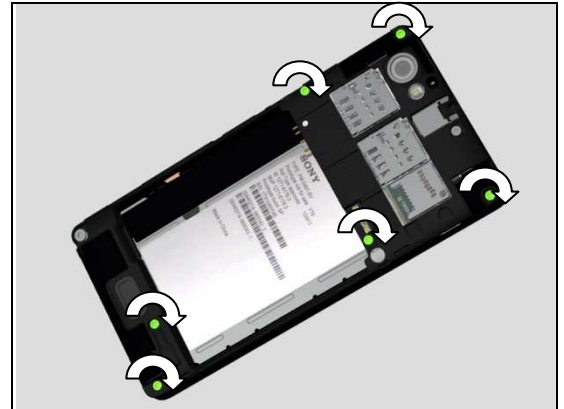


Apply 7~9 Ncm torque when tightening Screw M1.6*3.0 with Bits (T5).



Reassembly

Apply 7~9 Ncm torque when tightening the six screws M1.6*4.0 with Bits (T5).

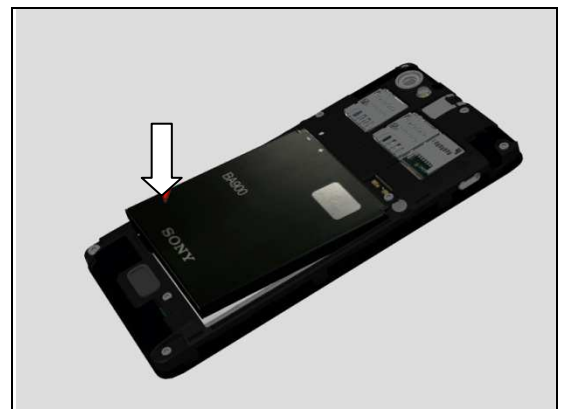


5.4 Battery

Insert the Battery at the top like this.



Press at the bottom to secure its position.



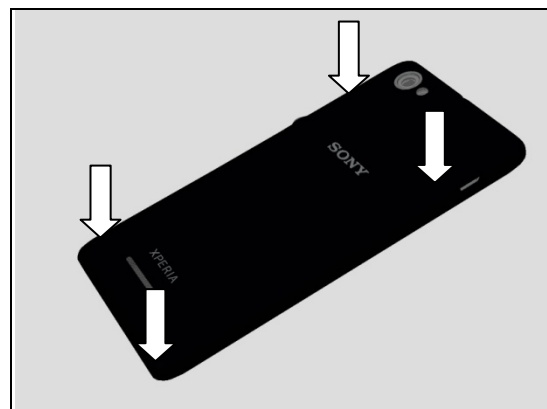
5.5 Battery Cover Assy

Prepare the Battery Cover Assy at its proper position as shown.



Reassembly

Press the four sides to snap the Battery Cover Assy.



6 Revision History

Rev.	Date	Changes / Comments
1	2013-Aug-09	Initial release
2	2013-Sep-02	Update 4.28 Touch Panel chapter with both disassembly and reassembly
3	2012-Nov-13 th	Update G-Sensor Calibration reference document from 1277-2384 to 1277-8589